

INSTRUCTIONS

1. Original and/or subsequent record used to evaluate the corner position.
2. Description of evidence found, note discrepancies in the record, state method of establishing lost or obliterated corners.
3. Description of monument and accessories set to perpetuate the corner position.
4. Sketch of corner, show all pertinent data which can best be shown in a sketch example, corner marking, topography ties, position of accessories, etc.
5. Certification must be signed and sealed by Land Surveyor registered in the State of Montana.
6. Fill in Cross Index & Section Diagram at bottom of sheet.

CERTIFIED CORNER RECORDATION

Section 26, SE $\frac{1}{4}$, NE $\frac{1}{4}$
Corner U.S. Project Boundary T. 37N R. 28W P.M.M. Lincoln County

No GLO corner established at this point.

Found Corps of Engineers, U.S. Army Project Boundary marker, a 4 $\frac{1}{2}$ " square concrete monument w/ brass cap marked as noted below, at corner. No bearing trees. Monument flush w/ ground, in open grassy area.

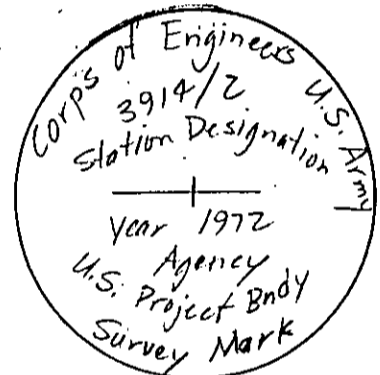
Set bearing tree witness: 11" Ponderosa Pine N64°E 29.1 feet mkd. T37N, R28W S26/3914/2 BT, signed and painted as per USFS Specs.

No other trees available on USA land.

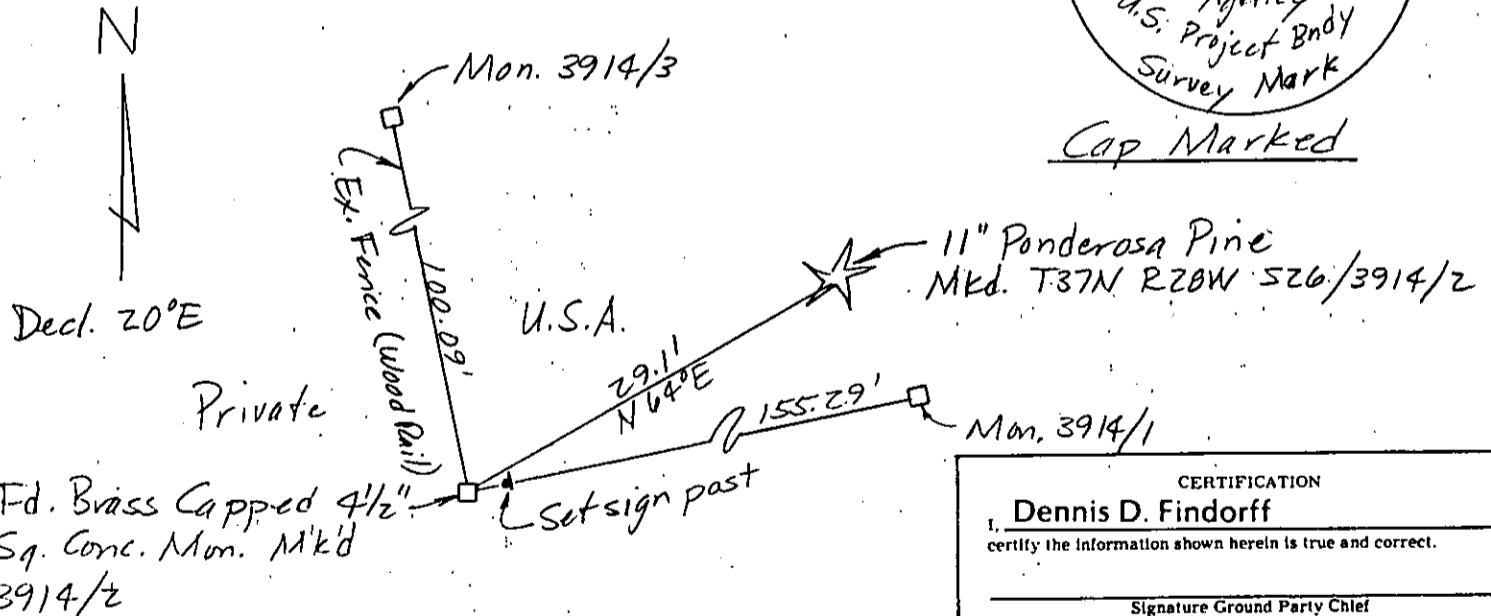
A monument as per above description mkd. 3914/3 bears N11°W 100.09 feet at fence corner.

A monument as per above description mkd. 3914/1 bears N83°E 155.29 feet.

Set a steel sign post E. of Mon.



Cap Marked



CERTIFICATION

I, Dennis D. Findorff
certify the information shown herein is true and correct.

Signature Ground Party Chief

I, Robert E. Findorff
certify that this Corner Record correctly represents work performed by me or under my direction in compliance with the "Corner Recordation Act" (MCA) et seq., M.C.A.)

Signature of Surveyor & Seal

Date 6/6/87 Reg. No. 3976ES

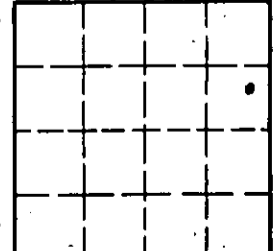
Employer: Self

SKETCH OF CORNER (SEE ABOVE)

Office of Clerk and Recorder, County of Lincoln. This "corner record" was filed for record on June 30, 1987 was noted on the cross-index plat and is assigned page No. 3568, in book No. _____

Janet BF Sigel by Bill Findorff
County Official Deputy

Sec. 26, T37N, R28W



Cross Index No. S-T 20-21 T. 37N R. 28W P.M.M.

Adopted July 1, 1981, Montana Board of Professional Engineers & Land Surveyors

• corner this sheet