

INSTRUCTIONS

1. Original and/or subsequent record used to evaluate the corner position.
2. Description of evidence found, note discrepancies in the record, state method of establishing lost or obliterated corners.
3. Description of monument and accessories set to perpetuate the corner position.
4. Sketch or corner, show all pertinent data which can best be shown in a sketch example, corner marking, topography ties, position of accessories, etc.
5. Certification must be signed and sealed by Registered Land Surveyor in State of Montana.
6. Fill in Cross Index & Section Diagram at bottom of sheet.

CERTIFIED CORNER RECORDATION

Corner C. E. 1/16 Sec. 35 T. 37 N. R. 28W. P.M.M. Lincoln County

I. No original records.

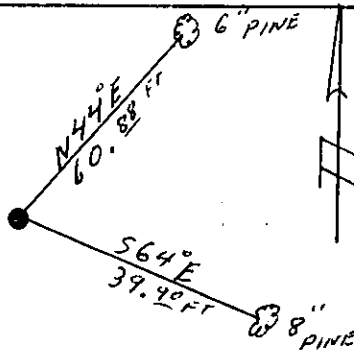
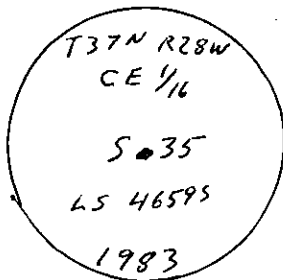
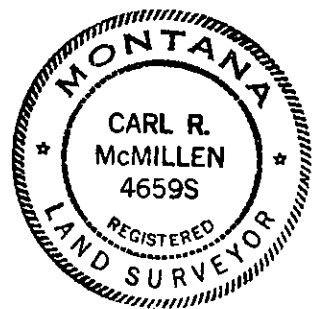
II. N/A

III. Set a Driveable Alum. Mon. with rock cairn, (5/8"x24" Alum. Mon. w/3" cap).

Scribed 2 trees:

A 6" Pine bears N.44°E., 60.88 ft., marked CE1/16 S35 B.T.

A 8" Pine bears S.64°E., 39.90 ft., marked CE1/16 S35 B.T.



SKETCH OF CORNER

CERTIFICATION

I, F. D. Higgins

certify the information shown herein is true and correct.

F. D. Higgins

Signature Ground Party Chief

I, Carl R. McMullen, L.S.

certify that this Corner Record correctly represents work performed by me or under my direction in compliance with the "Corner Recordation Act" (70-22-101, et seq., M.C.A.)

Carl R. McMullen

Signature of Surveyor & Seal

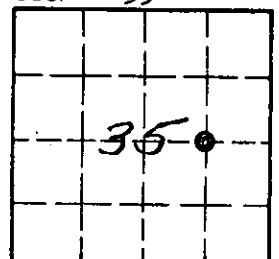
Date: 12/15/83 Reg. No. 4659-S

Employer: Carl R. McMullen & Assoc.

Office of Clerk and Recorder, County of Lincoln. This "corner record" was filed for record on the March 21st day of 1984 was noted on the cross-index plat and is assigned page No. 2590, in book No. _____

Janet BF Sigel by Betty L. Conces
County Official deputy

Sec. 35



• - corner this sheet

Cross Index No. X-20 T. 37N. R. 28W. P.M.M.