

## INSTRUCTIONS

1. Original and/or subsequent record used to evaluate the corner position.
2. Description of evidence found, note discrepancies in the record, state method of establishing lost or obliterated corners.
3. Description of monument and accessories set to perpetuate the corner position.
4. Sketch or corner, show all pertinent data which can best be shown in a sketch example, corner marking, topography lies, position of accessories, etc.
5. Certification must be signed and sealed by Registered Land Surveyor in State of Montana.
6. Fill in Cross Index & Section Diagram at bottom of sheet.

## CERTIFIED CORNER RECORDATION

Corner C.-W.-E. 1/64 Sec. 35 T. 37N. R. 28W. P.M.M. Lincoln County

I. No original records.

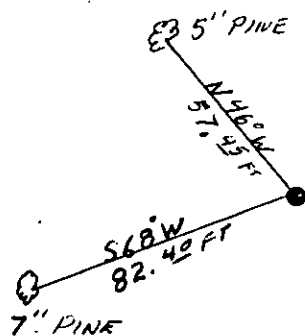
II. N/A

III. Set a Driveable Alum. Mon. with rock cairn, (5/8"x24" Alum. Mon. w/3" cap).

Scribed 2 B.T.s:

A 7" Pine, bears S.68°W., 82.40 ft., marked C-W-E1/64 S35 B.T.

A 5" Pine, bears N.46°W., 57.45 ft., marked C-W-E1/64 S35 B.T.



SKETCH OF CORNER

## CERTIFICATION

I, F. D. Higgins

certify the information shown herein is true and correct.

F. D. Higgins

Signature Ground Party Chief

I, Carl R. McMillen, L.S.

certify that this Corner Record correctly represents work performed by me or under by direction in compliance with the "Corner Recordation Act" (MCA 10-22-101, et seq., M.D.A.)

Carl R. McMillen

Signature of Surveyor & Seal

Date 12/15/83 Reg. No. 4659-S

Employer: Carl R. McMillen & Assoc.

T37N R28W  
C-W-E 1/64

S-35  
LS 4659S

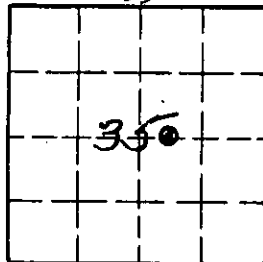
1983

Office of Clerk and Recorder, County of Lincoln. This "corner record" was filed for record on the March 21<sup>st</sup> day of 1984 was noted on the cross-index plat and is assigned page No. 2587, in book No. \_\_\_\_\_

Jane B. Siegel by Betty L. Conner  
County Official deputy

Cross Index No. X-19-20 T. 37N. R. 28W. P.M.M.

Sec. 35



• - corner this sheet