

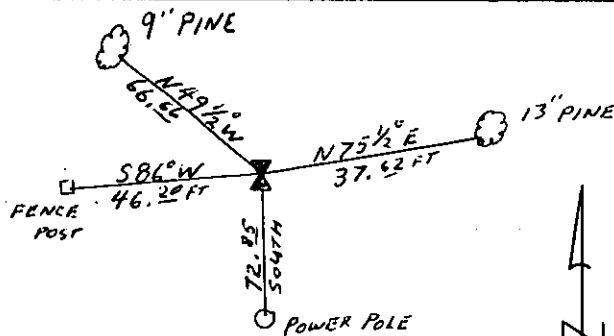
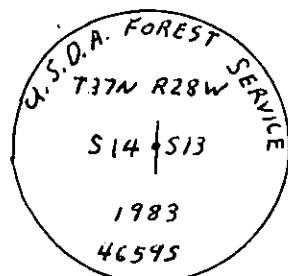
INSTRUCTIONS

1. Original and/or subsequent record used to evaluate the corner position.
2. Description of evidence found, note discrepancies in the record, state method of establishing lost or obliterated corners.
3. Description of monument and accessories set to perpetuate the corner position.
4. Sketch or corner, show all pertinent data which can best be shown in a sketch example, corner marking, topography ties, position of accessories, etc.
5. Certification must be signed and sealed by Registered Land Surveyor in State of Montana.
6. Fill in Cross Index & Section Diagram at bottom of sheet.

CERTIFIED CORNER RECORDATION

Corner E. 1/4 Sec. 14 T. 37N. R. 28W. P.M.M. Lincoln County

- I. From 1968 Retracement Survey: Set an Iron Post 30" long, 2 1/2" dia., 24" in ground with Brass Cap, from which:
- A rotted Pine Stump bears S.56°E., 58 lks. (orig. B.T.)
 - An 8" Pine bears N.75 1/2°E., 57 lks.
 - A 5" Pine bears N.49 1/2°W., 101 lks.
- II. Found B.L.M. 2 1/2" I.P. with Brass Cap, damaged by road maintenance.
- Found 13" Pine bears N.75 1/2°E., 37.62 ft., mkd 1/4S.13 B.T.
 - Found 9" Pine, bears N.49 1/2°W., 66.66 ft. mkd. 1/4S.14 B.T.
- III. Set USDA Alum. Mon. 24" in ground in rock cairn, (2 1/2"x30" Alum. Mon. w/3" cap).
- Set 54-3 tag in 13" Pine bears N.75 1/2°E., 37.62 ft.
 - Set 54-3 tag in 5" Fence Post bears S.86°W., 46.2 ft.
 - Set 54-3 tag in 9" Power Pole bears South, 72.85 ft.
- No other trees available in N.W. or S.W. quadrants.



SKETCH OF CORNER

CERTIFICATION

F. D. Higgins

I, F. D. Higgins certify the information shown herein is true and correct.

Signature Ground Party Chief

Carl R. McMillen, L.S.

I, Carl R. McMillen certify that this Corner Record correctly represents work performed by me or under by direction in compliance with the "Corner Recordation Act" (70-72-101, et seq. M.D.A.)

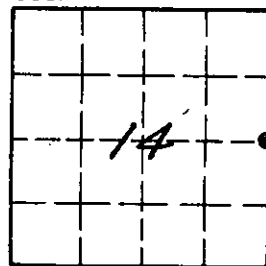
Signature of Surveyor & Seal

Date: 12/12/83 Reg. No. 4659-SEmployer: Carl R. McMillen & Assoc.

Office of Clerk and Recorder, County of Lincoln. This "corner record" was filed for record on the March 21st day of 1984 was noted on the cross-index plat and is assigned page No. 2567, in book No. _____

Janet BF Siegel by Betty L. Conces
County Official deputy

Cross Index No. L-21 T. 37N. R. 28W. P.M.M.

Sec. 14

• - corner this sheet