

INSTRUCTIONS

1. Original and/or subsequent record used to evaluate the corner position.
2. Description of evidence found, note discrepancies in the record, state method of establishing lost or obliterated corners.
3. Description of monument and accessories set to perpetuate the corner position.
4. Sketch or corner, show all pertinent data which can best be shown in a sketch example, corner marking, topography ties, position of accessories, etc.
5. Certification must be signed and sealed by Registered Land Surveyor in State of Montana.
6. Fill in Cross Index & Section Diagram at bottom of sheet.

CERTIFIED CORNER RECORDATION

Corner N. E. Cor. Sec. 14 T. 37N. R. 28W. P.M.M. Lincoln County

I. From original 1894 G.L.O. notes: Set Post 4' long, 4" square, 24" in ground with 4 notches on S. and 1 notch on E. edges from which:

- A Yellow Pine 33" diam., bears N.70°E., 66 lks.
- A Yellow Pine 24" diam., bears S.41°39'E., 19 lks.
- A Yellow Pine 30" diam., bears S.17°W., 18 lks.
- A Yellow Pine 34" diam., bears N.60°30'W., 74 lks.

(SEE NOTE I-4A)

II. Found B.L.M. Brass Cap on Iron Pipe set in ground.

Found Orig. 25" Yellow Pine bears S.41°39'E., 12.54 ft., scribing visible.

Found Orig. 30" Yellow Pine bears S.17°W., 11.88 ft., scribing visible.

Found Orig. 32" Yellow Pine stump bears N.70°E., 43.56 ft., scribing visible.

Found New 9" Pine bears N.26°W., 40.92 ft.

Found New 15" Pine bears S.55°W., 89.76 ft.

Found New 11" Pine bears S.2 1/2°E., 95.70 ft.

III. Formed new Rock Cairn around Mon.

Set 54-4 tags on all trees and stumps.

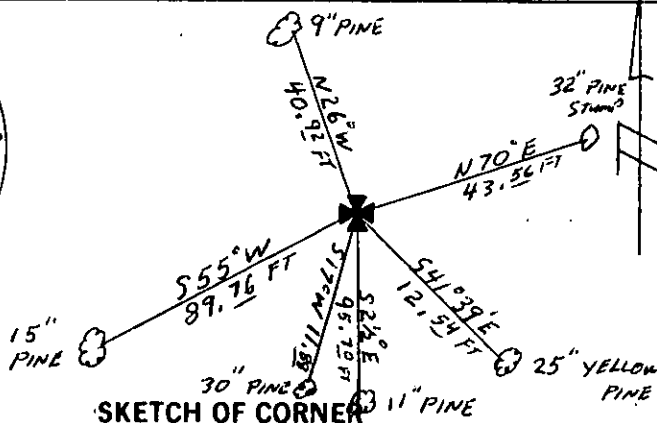
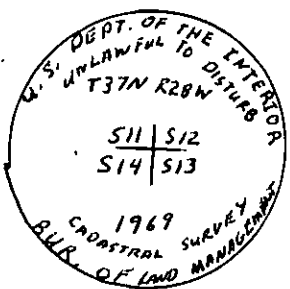
I-A. B.L.M. re-mon., June, 1969: Set 2 1/2" I.P. w/Brass cap, 24" in ground.

S.12 B.T., 6" Pine, bears N.36°E., 101 lks.

S.13 B.T., 8" Pine, bears S.2 1/2°E., 145 lks.

S.14 B.T., 10" Pine, bears S.55°W., 136 lks.

S.11 B.T., 6" Pine, bears N.26°W., 62 lks.



CERTIFICATION

I, E. D. Higgins
certify the information shown herein is true and correct.

E. D. Higgins
Signature Ground Party Chief

I, Carl R. McMillen, L.S.
certify that this Corner Record correctly represents work performed by me or under by direction in compliance with the "Corner Recordation Act" (70-22-101, et seq., M.D.A.)

Carl R. McMillen
Signature of Surveyor & Seal

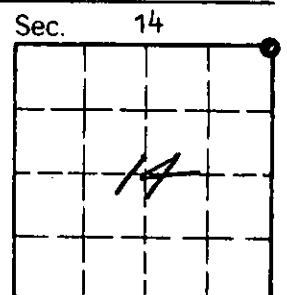
Date: 12/12/83 Reg. No. 4659-S

Employer: Carl R. McMillen & Assoc.

Office of Clerk and Recorder, County of Lincoln. This "corner record" was filed for record on the March 21st day of 1984 was noted on the cross-index plat and is assigned page No. 2566, in book No. _____

Janet BF Siegel by Betty L. Conner
County Official deputy

Cross Index No. J-21 T. 37N R. 28W P.M.M.



• - corner this sheet