

INSTRUCTIONS

1. Original and/or subsequent record used to evaluate the corner position.
2. Description of evidence found, note discrepancies in the record, state method of establishing lost or obliterated corners.
3. Description of monument and accessories set to perpetuate the corner position.
4. Sketch or corner, show all pertinent data which can best be shown in a sketch example, corner marking, topography ties, position of accessories, etc.
5. Certification must be signed and sealed by Registered Land Surveyor in State of Montana.
6. Fill in Cross Index & Section Diagram at bottom of sheet.

CERTIFIED CORNER RECORDATION

Corner C.-N.-S.-N.E. 1/256 Sec. 14 T. 37N. R. 28W. P.M.M. Lincoln County

I. No original records.

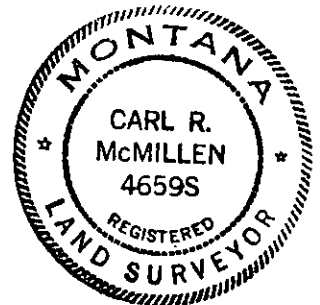
II. N/A

III. Set Driveable Alum. Mon. with rock cairn, (5/8"x24" Alum. Mon. w/3" cap).

Scribed 2 B.T.s:

A 10" Pine bears N.28°E., 19.30 ft., mkd. C-N-S-NE1/256 S14 B.T.

A 8" Pine bears S.75°E., 28.10 ft., mkd. C-N-S-NE1/256 S14 B.T.



CERTIFICATION

I, F. D. Higgins
certify the information shown herein is true and correct.

F. D. Higgins

Signature Ground Party Chief

I, Carl R. McMillen, L.S.

certify that this Corner Record correctly represents work performed by me or under my direction in compliance with the "Corner Recordation Act" (70-22-101, et seq., M.C.A.)

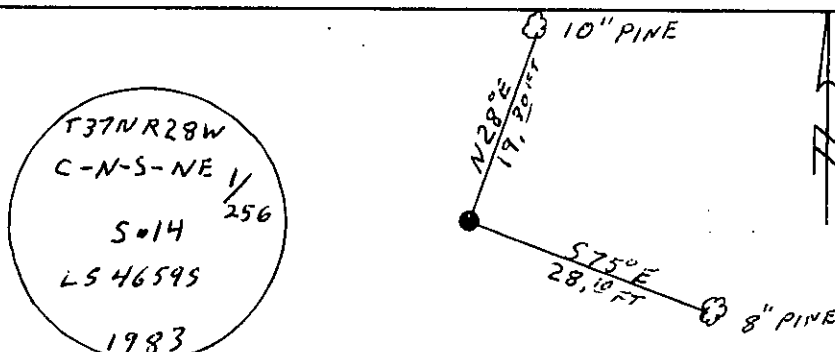
Carl R. McMillen

Signature of Surveyor & Seal

Date: 12/12/83 Reg. No. 4659-S

Employer: Carl R. McMillen & Assoc.

SKETCH OF CORNER



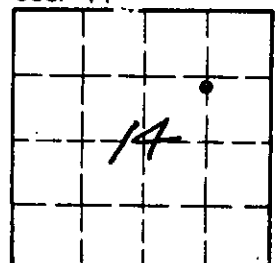
Office of Clerk and Recorder, County of Lincoln. This "corner record" was filed for record on the March 21st day of 1984 was noted on the cross-index plat and is assigned page No. 2558, in book No. Janet BF Siegel by Betty L. Conces

County Official

deputy

Cross Index No. KK-L-20 T. 37N R. 28W PMM

Sec. 14



• - corner this sheet