

# CERTIFIED CORNER RECORDATION

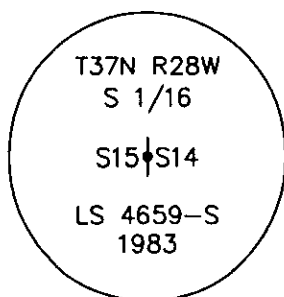
Corner S. 1/16 Sec. 15 14 T. 37N R. 28W P.M.M. Lincoln County

1. 1984 Certified Corner Recordation by Carl R. McMillen MT Reg. No. 4659-S: Set Driveable aluminum monument with rock cairn, (5/8" x 24" aluminum monument with 3" cap).

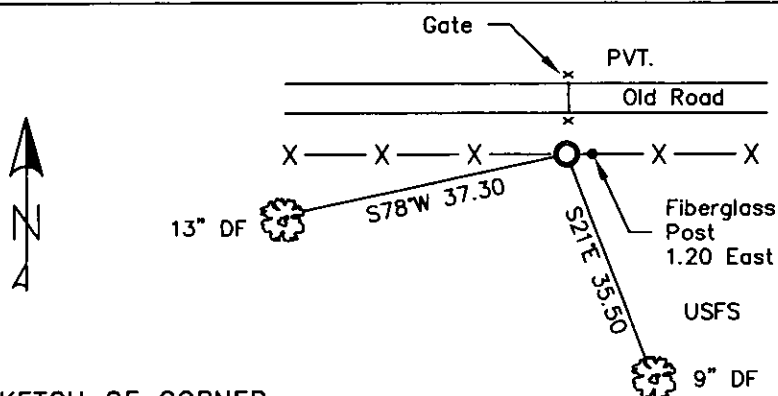
Set 2 new BT's:

- A 6" red fir bears S21°E, 35.50 ft., marked S 1/16 S14 BT.
- An 8" red fir bears S78°W, 37.30 ft., marked S 1/16 S15 BT.

2. Found 3 1/4 inch USDA aluminum monument 4 ins. out of ground surrounded by a small mound of stone.  
A 9 inch douglas fir S21°E, 35.50 ft., partially healed face, illegible scribing visible.  
A 13 inch douglas fir S78°W, 37.30 ft., with well healed face.  
A fiberglass post with LSM sign 1.20 ft. east.
3. Restacked and painted stones around monument.  
Put aluminum nails at record distances in BTs.  
Repainted rings and blazes and put up new BT tags.



MAGNETIC DECLINATION - 16° EAST



SKETCH OF CORNER

CERTIFICATION

I, CURT HECKROTH certify the information shown is true, correct, and correct.

Signature Ground Party, Chief

I, LAWRENCE A. GLAHE certify that this Corner Recordation represents work performed by me or under my direct supervision in compliance with the "Corner Recordation Act" (MCA 17-22-101, et seq., M.C.A.)

9748 LS

DATE: 1-25-10 REGISTERED SURVEYOR 9748 LS

Employer: GLAHE & ASSOCIATES

Office of Clerk and Recorder, County of Lincoln. This "corner

record" was f 224138 BOOK: CCR CC&R'S PAGE: 11390 Pages: 1

STATE OF MONTANA LINCOLN COUNTY

was noted on RECORDED: 01/27/2010 12:59 KOI: CC&R'S

TAMMY D. LAUER CLERK AND RECORDER

book No. FEE: \$0.00

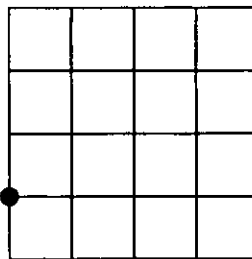
BY: [Signature]

TO: FILED

Cross Index No. M-17 T. 37N R. 28W PMM

Adopted July 1, 1981, Montana Board of Professional Engineers & Land Surveyors

Sec. 14



● corner this sheet