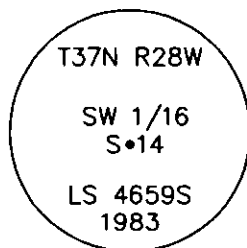


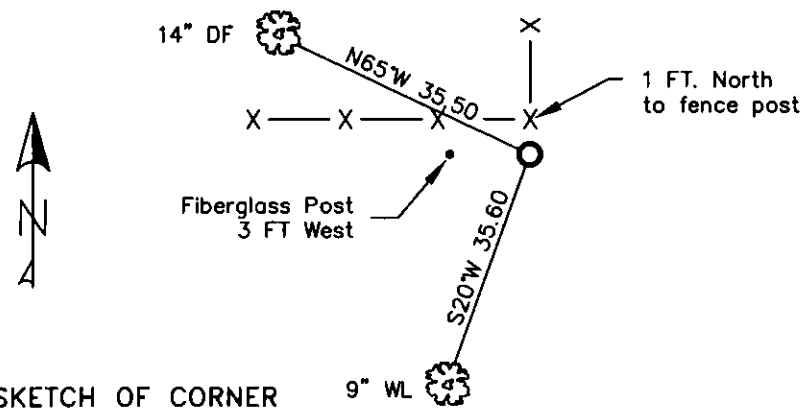
CERTIFIED CORNER RECORDATION

Corner S. W. 1/16 Sec. 14 T. 37N R. 28W P.M.M. Lincoln County

1. 1984 Certified Corner Recordation by Carl R. McMillen MT Reg. No. 4659-S: Set driveable alum. mon. with rock cairn, (5/8"x24" alum. mon. w/3" cap). Scribed 2 trees: A 10" tamarack, bears S20°W., 35.00 ft., marked SW1/16 S14 BT. A 9" red fir, bears N65°W., 35.50 ft., marked SW1/16 S14 BT.
2. Found 3 1/4 inch aluminum monument 4 ins. out of ground, surrounded by a small mound of stone.
A 9 inch western larch S20°W 35.60 ft., (record 35.00) with well healed face.
A 14 inch douglas fir S65°E 35.50 ft., with well healed face (blaze faces due east).
A fiberglass post 3 ft west with LSM and Boundary decals.
3. Restacked and painted stones around monument.
Put aluminum nail in side-center of western larch (35.60 ft., record of 35.00 doesn't reach tree).
Repainted rings and blazes, put new BT tag on larch, BT tag on fir is in good shape.



MAGNETIC DECLINATION - 16° EAST



SKETCH OF CORNER

CERTIFICATION

I, CURT HECKROTH
certify the information shown is true and correct.

[Signature]
Signature Ground Party Chief

I, LAWRENCE A. GLAHE
certify that this Corner Recordation represents work performed by me or under my supervision in compliance with the "Corner Recordation Act" (MCA, et seq., M.C.A.)

[Signature]
9748 LS

Date: 1-25-10 9748 LS
Employer: GLAHE & ASSOCIATES

Office of Clerk and Recorder, County of Lincoln. This "corner

record" was filed for 224137 BOOK: CCR CC&R'S PAGE: 11389 Pages: 1

STATE OF MONTANA LINCOLN COUNTY

was noted on the RECORDED: 01/27/2010 12:58 KOI: CC&R'S

book No. TAMMY D. LAUER CLERK AND RECORDER

FEE: \$0.00

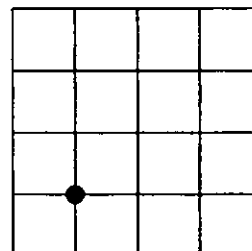
BY: *[Signature]*

NO: FILED

Cross Index No. M-18 T. 37N R. 28W PMM

Adopted July 1, 1981, Montana Board of Professional Engineers & Land Surveyors

Sec. 14



● corner this sheet