

CERTIFIED CORNER RECORDATION

Corner W. 1/16 Sec. ¹⁴/₂₃ T. 37N R. 28W P.M.M. Lincoln County

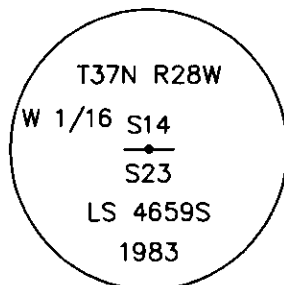
1. 1984 Certified Corner Recordation by Carl R. McMillen, MT Reg. No. 4659-S: Set driveable alum. mon. with rock cairn, (5/8" x 24" alum. mon. w/3" cap).

Scribed 2 BTs:

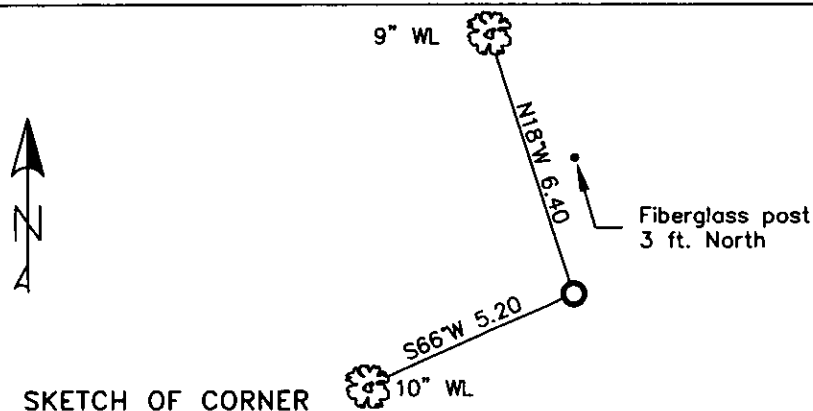
- An 8 inch tamarack bears S66°E., 5.20 ft. mkd. W1/16 S23 BT.
A 7 inch tamarack bears N18°W., 6.40 ft. mkd. W1/16 S14 BT.

2. Found a 3 1/4 inch USDA aluminum cap by small mound of stone.
A 10 inch western larch S66°W (record S66°E) 5.20 ft. with well healed face.
A 9 inch western larch N18°W 6.40 ft. with well healed face.
A fiberglass post lying on ground with LSM sign.

3. Repainted stones around monument.
Put aluminum nails at record distances and repainted rings and blazes on BTs.
Put boundary decal on fiberglass post and placed it 3 ft. north of corner.



MAGNETIC DECLINATION - 16° EAST



CERTIFICATION

I, CURT HECKROTH
certify the information shown on this record is true and correct.

Curt Heckroth
Signature Ground Party, Clerk

LAWRENCE A. GLAHE
I, LAWRENCE A. GLAHE
certify that this Corner Record correctly represents work
performed by me or under my direction in compliance with
the "Corner Recordation Act" (70-225-101, et seq., M.C.A.)

9748 LS

DATE: 1/25/10
EMPLOYER: GLAHE & ASSOCIATES

Office of Clerk and Recorder, County of Lincoln. This "corner

record" was filed 224136 BOOK: CCR CC&R'S PAGE: 11388 Pages: 1

STATE OF MONTANA LINCOLN COUNTY

was noted on RECORDED: 01/27/2010 12:57 KOI: CC&R'S

TAMMY D. LAUER CLERK AND RECORDER

book No. FEE: \$0.00

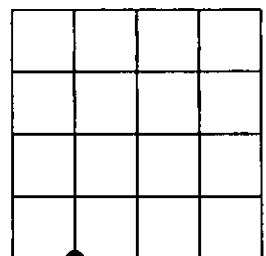
BY: *Heavenly Hands*

TO: FILED

Cross Index No. N-18 T. 37N R. 28W PMM

Adopted July 1, 1981, Montana Board of Professional Engineers & Land Surveyors

Sec. 14



● corner this sheet