

CERTIFIED CORNER RECORDATION

Corner S. 1/4 Sec. 14 T. 37N R. 28W P.M.M. Lincoln County

1. 1894 Original GLO notes: Set limestone 14"x8"x4", 10" in ground, marked 1/4 on North face,

from which:

- A fir 12" diam. bears S36°15'E., 25 lks.
- A fir 8" diam. bears N31°W., 16 lks.

1969 BLM Remonumentation: Set 2 1/2" IP w/ brass cap, 24" in ground.
S. 14 BT, 10" spruce, bears N40 1/4°E, 50 lks.
S. 23 BT, 12" spruce, bears S65°E, 26 lks.

1984 Certified Corner Recordation by Carl R. McMillen MT Reg. No. 4659-S: Found BLM brass cap on iron pipe.

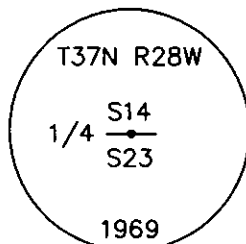
- A 10" spruce, bears N40 1/4°E., 33.00 ft.
- A 13" spruce, bears S65°E., 17.16 ft.
- A 24" Red fir stump, bears S30°E., 14.00 ft.
- Placed rock cairn around mon.

2. Found a 3 1/4 inch BLM brass monument 6 ins. out of ground, surrounded by a small mound of stone.
GLO 24 inch stump S36°E 16.50 ft. with chopped face and BT tag.
GLO 18 inch stump N31°W 10.56 ft. with chopped face and BT tag.
A 13 inch spruce N40°E 33.00 ft. with well healed face.
A dead 19 inch spruce S65°E 17.16 ft. (busted off at 8 ft.) partially healed face, illegible scribing visible.
A steel post with LSM and Boundary decals 3 ft. west.

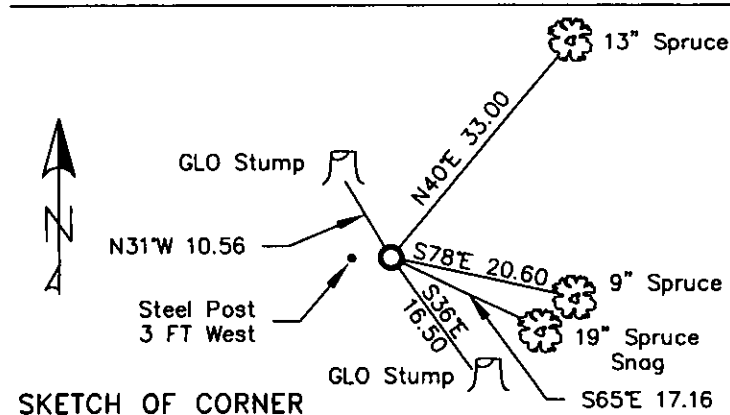
3. Restacked and painted stones around monument.

Established new bearing tree:

- A 9 inch engelmann spruce S78°E 20.60 ft. scribed 1/4 S23 BT.
- Repainted ring and blaze and put aluminum nail at record distance on BT in Section 14 and new BT tag.



MAGNETIC DECLINATION - 16° EAST



CERTIFICATION	
I, <u>CURT HECKROTH</u>	certify the information shown herein is true and correct.
<i>[Signature]</i>	Signature Ground Party Officer
I, <u>LAWRENCE A. GLAHE</u>	certify that this Corner Record correctly represents work performed by me or under my direct supervision in compliance with the "Corner Restoration Act" (7-11-22-106 et seq., M.C.A.)
<i>[Signature]</i>	Signature Registered Professional Engineer and Land Surveyor
Date: <u>1-25-10</u>	Reg. No. <u>9748 LS</u>
Employer: <u>GLAHE & ASSOCIATES, INC.</u>	

Office of Clerk and Recorder, County of Lincoln. This "corner

record" was filed for 224135 BOOK: CCR CC&R'S PAGE: 11387 Pages: 1

was noted on the STATE OF MONTANA LINCOLN COUNTY RECORDED: 01/27/2010 12:56 KOI: CCR'S

book No. TAMMY D. LAUER CLERK AND RECORDER

FEE: \$0.00

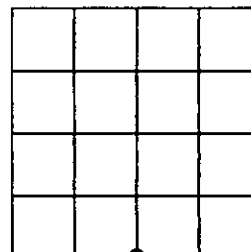
BY: *[Signature]*

CO: FILED

Cross Index No. N-19 T. 37N R. 28W PMM

Adopted July 1, 1981, Montana Board of Professional Engineers & Land Surveyors

Sec. 14



● corner this sheet