

# CERTIFIED CORNER RECORDATION

Corner E. 1/4 Sec. 14 T. 37N R. 28W P.M.M. Lincoln County

1. 1968 Retracement Survey: Set an iron post 30" long, 2 1/2" dia., 24" in ground with brass cap,

from which:

- A rotted pine stump bears S56°E., 58 lks. (orig. BT)
- An 8" pine bears N75 1/2°E, 57 lks.
- A 5" pine bears N49 1/2°W, 101 lks.

1984 Certified Corner Recordation by Carl R. McMillen, MT Reg. No. 4659-S:  
Found BLM 2 1/2" IP with brass cap, damaged by road maintenance.

from which:

- A 13" pine, bears N75 1/2°E, 37.62 ft., mkd 1/4 S13 BT.
- A 9" pine, bears N49 1/2°W, 66.66 ft., mkd. 1/4 S14 BT.

Set USDA alum. mon. 24" in ground in rock cairn, (2 1/2"x30" alum. mon. w/3" cap).  
Set 54-3 tag in 13" pine bears N75 1/2°E, 37.62 ft.  
Set 54-3 tag in 5" fence post bears S86°W, 46.2 ft.  
Set 54-3 tag in 9" power pole bears South, 72.85 ft.

2. Found 3 1/4 inch USDA aluminum monument 6 ins. out of ground, surrounded by small mound of stone.

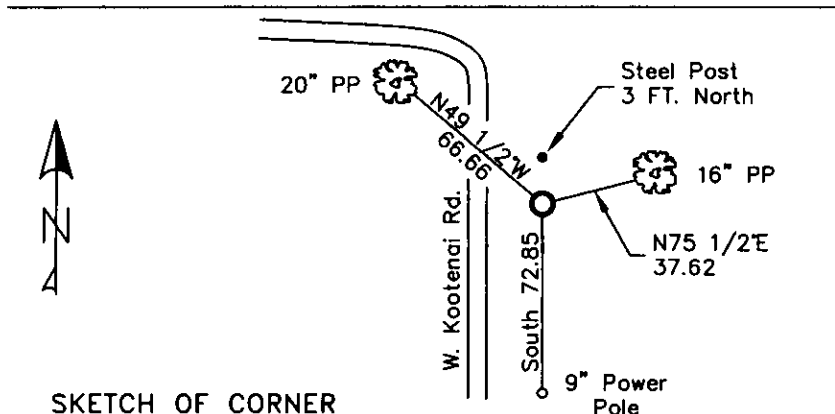
- A 16 inch ponderosa pine N75 1/2°E 37.62 ft. with well healed face.
- A 20 inch ponderosa pine N49 1/2°W 66.66 ft with well healed face.
- A 9 inch power pole South 72.85 ft. with BT tag.
- A steel post with LSM and Boundary decals 3 ft. north.

3. Restacked and painted stones around monument.

Put aluminum nails at record distances in BT's, repainted rings and blazes and put up new BT tags and LSM signs.  
BT tag on power pole is good.



MAGNETIC DECLINATION - 16° EAST



SKETCH OF CORNER

CERTIFICATION  
I, CURT HECKROTH certify the information shown is true and correct.  
Signature Ground Party Chief  
I, LAWRENCE A. GLAHE certify that this Corner Recordation represents work performed by me or under my direct supervision in compliance with the "Corner Recordation Act" (70-22-01, et seq., M.C.A.)  
Date: 1-25-10 No. 9748 LS  
Employer: GLAHE & ASSOCIATES  
REGISTERED SURVEYOR

Office of Clerk and Recorder, County of Lincoln. This "corner

record" was f 224134 BOOK: CCR CC&R'S PAGE: 11386 Pages: 1

STATE OF MONTANA LINCOLN COUNTY

was noted on RECORDED: 01/27/2010 12:55 KOI: CC&R'S in

book No. TAMMY D. LAUER CLERK AND RECORDER

FEE: \$0.00

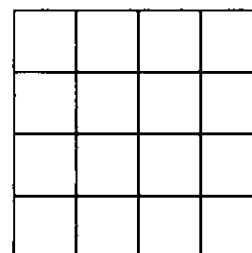
TO: FILED

BY: Jeanie Pennington

Cross Index No. L-21 T. 37N R. 28W PMM

Adopted July 1, 1981, Montana Board of Professional Engineers & Land Surveyors

Sec. 14



● corner this sheet