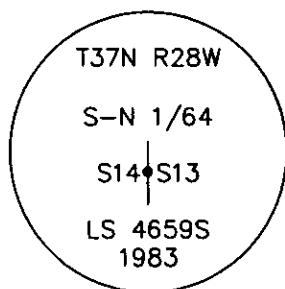


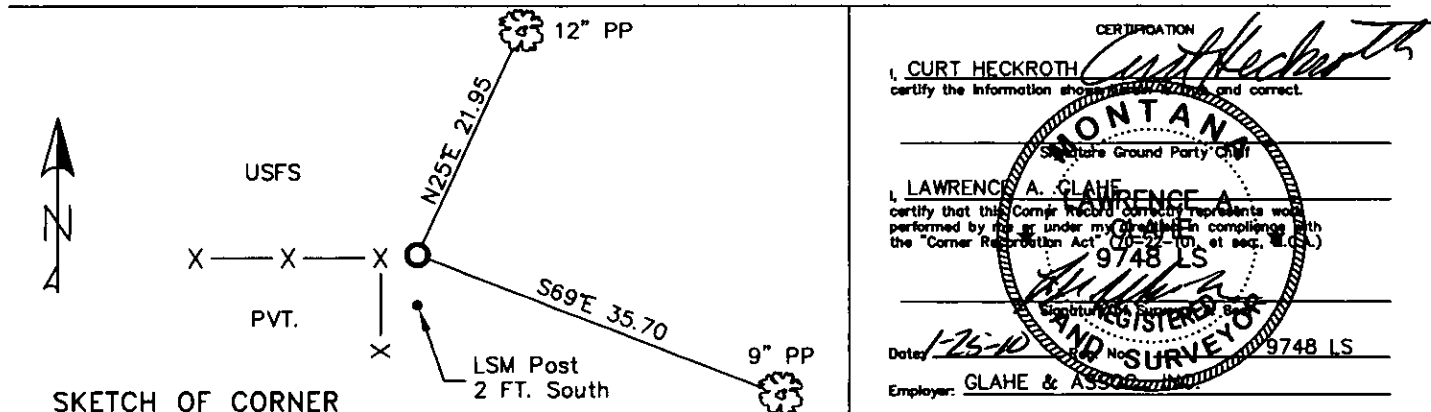
CERTIFIED CORNER RECORDATION

Corner S.-N. 1/64 Sec. 14 13 T. 37N R. 28W P.M.M. Lincoln County

1. 1983 Certified Corner Recordation by Carl R. McMillen, MT Reg. No. 4659-S:
Set driveable aluminum monument in rock cairn, (5/8"x24" aluminum monument w/3" cap).
from which:
An 8" pine, bears N25°E, 21.95 ft., mkd S-N 1/64 S13 BT.
A 7" pine, bears S69°E, 35.7 ft., mkd. S-N 1/64 S13 BT.
2. Found a 3 1/4 inch aluminum cap, surrounded by small stone mound.
A 12 inch ponderosa pine N25°E 21.95 ft., with a well healed face.
A 9 inch ponderosa pine S69°E 35.70 ft. with well healed face.
3. Repainted stones around monument.
Put aluminum nails at record distances, repainted rings and blazes and put up new BT tags and LSM signs.



MAGNETIC DECLINATION - 16° EAST



Office of Clerk and Recorder, County of Lincoln. This "corner

record" was filed 224133 BOOK: CCR CC&R'S PAGE: 11385 Pages: 1

STATE OF MONTANA LINCOLN COUNTY
was noted on the RECORDED: 01/27/2010 12:54 KOI: CC&R'S

TAMMY D. LAUER CLERK AND RECORDER

book No. FEE: \$0.00

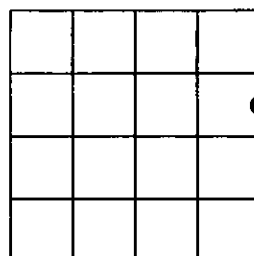
BY: *Jenni Lauer*

CO: FILED

Cross Index No. K-L 21 T. 37N R. 28W PMM

Adopted July 1, 1981, Montana Board of Professional Engineers & Land Surveyors

Sec. 14



● corner this sheet