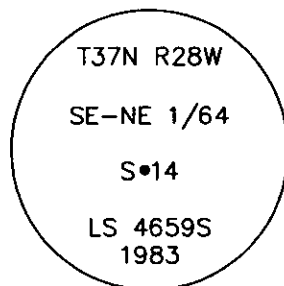


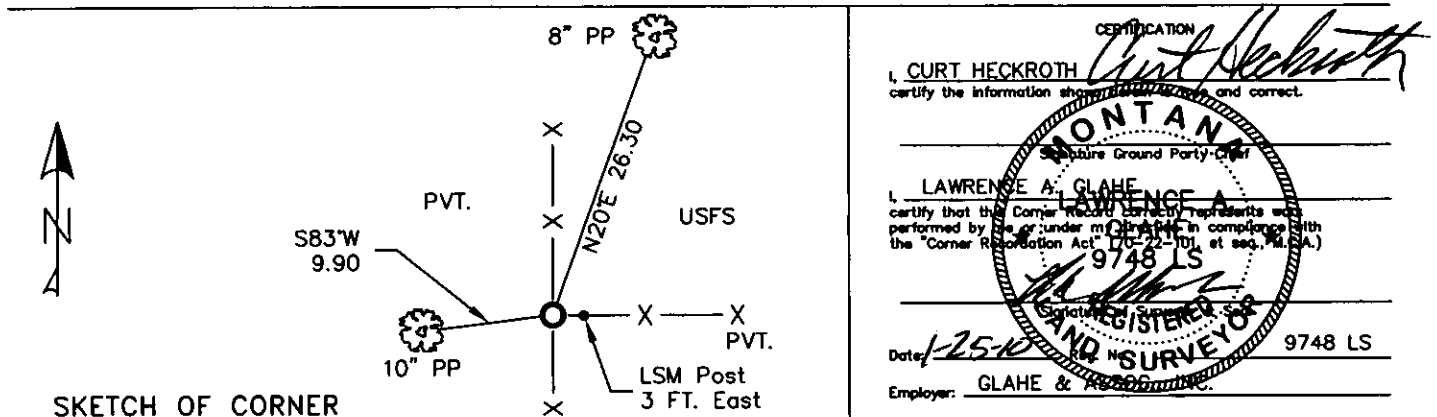
CERTIFIED CORNER RECORDATION

Corner S.E.-N.E. 1/64 Sec. 14 T. 37N R. 28W P.M.M. Lincoln County

1. 1983 Certified Corner Recordation by Carl R. McMillen, MT Reg. No. 4659-S:
Set driveable aluminum monument in rock cairn, (5/8"x24" aluminum monument w/3" cap).
from which:
A 6" pine, bears N24°E, 26.30 ft., mkd SE-NE 1/64 S14 BT.
A 7" pine, bears S83°W, 9.90 ft., mkd. SE-NE 1/64 S14 BT.
2. Found a 3 1/4 inch aluminum cap, surrounded by small mound of stones.
An 8 inch ponderosa pine N20°E (record N24°E) 26.30 ft., fairly healed face
64 scribing visible.
A 10 inch ponderosa pine S83°W 9.90 ft. with well healed face.
3. Restacked and painted stones around monument.
Put aluminum nails at record distances, repainted rings and blazes.
Put up new BT tags.



MAGNETIC DECLINATION - 16° EAST



Office of Clerk and Recorder, County of Lincoln. This "corner

record" was filed 224132 BOOK: CCR CC&R'S PAGE: 11384 Pages: 1

STATE OF MONTANA LINCOLN COUNTY

was noted on the RECORDED: 01/27/2010 12:53 KOI: CC&R'S

TAMMY D. LAUER CLERK AND RECORDER

book No. FEE: \$0.00

BY: Heannie Lauer

CO: FILED

Cross Index No. K-L-20-21T. 37N R. 28W PMM

Adopted July 1, 1981, Montana Board of Professional Engineers & Land Surveyors

Sec. 14			

● corner this sheet