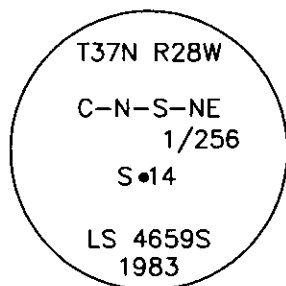


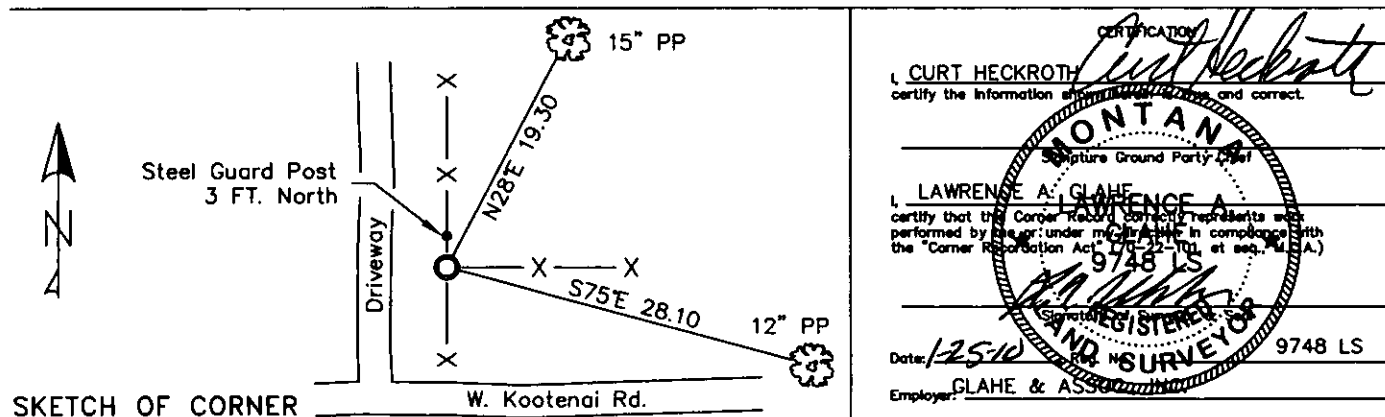
CERTIFIED CORNER RECORDATION

Corner C.-N.-S.-N.E. 1/256 S14 T. 37N R. 28W P.M.M. Lincoln County

1. 1983 Certified Corner Recordation by Carl R. McMillen, MT Reg. No. 4659-S:
Set driveable aluminum monument in rock cairn, (5/8"x24" aluminum monument w/3" cap).
from which:
A 10" pine, bears N28°E, 19.30 ft., mkd C-N-S-NE 1/256 S14 BT.
An 8" pine, bears S75°E, 28.10 ft., mkd. C-N-S-NE 1/256 S14 BT.
2. Found a 3 1/4 inch aluminum cap, surrounded by small mound of stone.
A 15 inch ponderosa pine N28°E 19.30 ft., with partially open face, illegible scribing visible.
A 12 inch ponderosa pine S75°E 28.10 ft. with well healed face.
3. Restacked and repainted stones around monument.
Put aluminum nails at record distances, repainted rings and blazes on BT's.
Put up new BT tags and LSM signs on BT's.
Put steel guard post 3 ft. north of monument with LSM and Boundary decals.



MAGNETIC DECLINATION - 16° EAST



Office of Clerk and Recorder, County of Lincoln. This "corner

record" was filed 224131 BOOK: CCR CC&R'S PAGE: 11383 Pages: 1

STATE OF MONTANA LINCOLN COUNTY
was noted on the RECORDED: 01/27/2010 12:52 KOI: CC&R'S

TAMMY D. LAUER CLERK AND RECORDER

book No. FEE: \$0.00

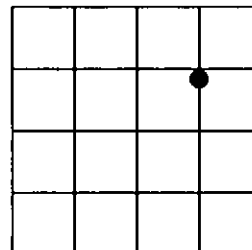
BY: *James Lauer*

NO: FILED

Cross Index No. KK-L 20 T. 37N R. 28W PMM

Adopted July 1, 1981, Montana Board of Professional Engineers & Land Surveyors

Sec. 14



● corner this sheet