

CERTIFIED CORNER RECORDATION

Corner W-E-E 1/256 Cor. bet Secs. 11 & 14 T. 37N R. 28W P.M.M. Lincoln County

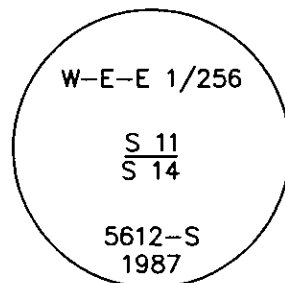
1. Record from Certificate of Survey No. 1467 by 2989ES: Set 5/8" x 24" rebar with plastic cap stamped 2989ES.

1988 Certified Corner Recordation by MT Reg. No. 5612-S: Found 1 1/4" diam. yellow plastic cap stamped "MARQUARDT 2989 ES" on a 5/8" rebar, flush with the ground. This monument is located in a cultivated field. This monument is verified and accepted as the W-E-E 1/256 corner therefore remonumented as shown.
At the same position as the found rebar set a 3/4" x 30" long aluminum rod with a 3 1/4" aluminum Forest Service cap marked as shown. Buried the aluminum rod 10" below the surface and lay the found rebar alongside.

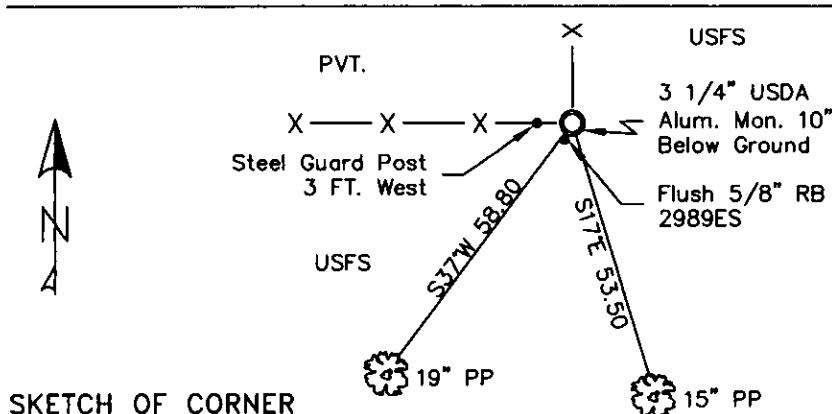
Established the following references:

An 11" lodgepole pine bears S17°E, 53.5 ft. scribed W-E-E 1/256 S14 BT.
A 12" lodgepole pine bears S37°W, 58.8 ft. scribed X BT.
Painted red bands around the bearing trees and attached Land Survey Monument and Bearing Tree signs.

2. Found 5/8 inch rebar with yellow cap MARQUARDT with a 3 1/4 inch aluminum monument on north side and 10 ins. below surface just east of 6x8 inch post.
A 15 inch ponderosa pine S17°E, 53.50 ft., partially healed face illegible scribing visible.
A 19 inch ponderosa pine S37°W, 58.80 ft., with well healed face.
3. Reburied aluminum monument with 4 ft. lath in hole next to it.
Put aluminum nail at record distance.
Repainted rings and blazes on BTs and put up new BT tags.
Set a steel guard post 3 ft. west of monument with LSM and Boundary decals.



MAGNETIC DECLINATION - 16° EAST



CERTIFICATION

I, CURT HECKROTH *Curt Heckroth*
certify the information is true, correct and correct.

LAWRENCE A. GLAHE *Lawrence A. Glahe*
certify that this Corner Recordation represents work performed by me or under my direction in compliance with the "Corner Recordation Act" (78-12-101, et seq., M.C.A.)

Date: 12/5/10 9748 LS
Employer: GLAHE & ASSOCIATES, INC.

Office of Clerk and Recorder, County of Lincoln. This "corner

record" was filed for 224129 BOOK: CCR CC&R'S PAGE: 11381 Pages: 1

STATE OF MONTANA LINCOLN COUNTY

was noted on the CCR: 01/27/2010 12:50 KOI: CC&R'S

TAMMY D. LAUER CLERK AND RECORDER

book No. 224129 FEE: \$0.00

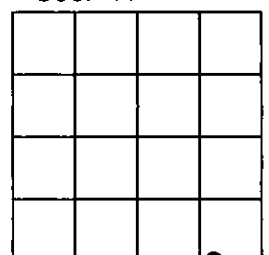
BY: *Tammy D. Lauer*

NO: FILED

Cross Index No. J-20-25 T. 37N R. 28W PMM

Adopted July 1, 1981, Montana Board of Professional Engineers & Land Surveyors

Sec. 11



● corner this sheet