

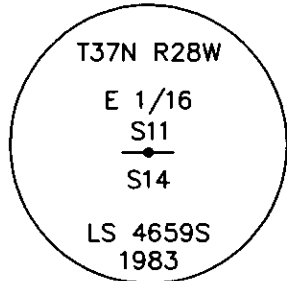
CERTIFIED CORNER RECORDATION

Corner E. 1/16 Sec. 11-14 T. 37N R. 28W P.M.M. Lincoln County

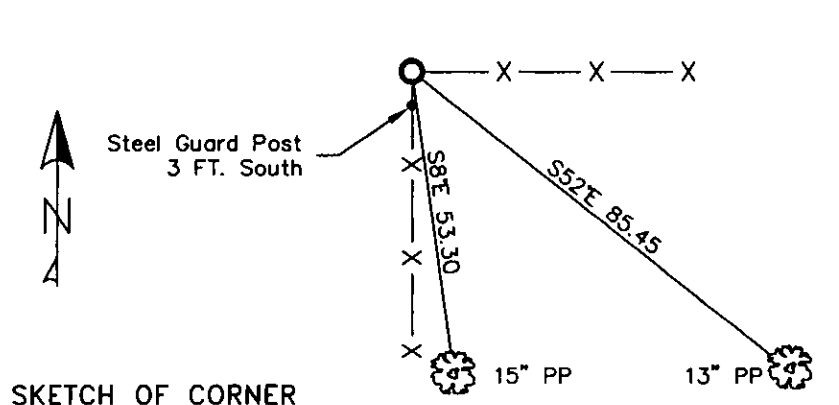
1. 1983 Certified Corner Recordation by Carl R. McMillen, MT Reg. No. 4659-S:
Set aluminum monument 1 ft. below surface of hay field, (5/8"x24" aluminum monument w/3" cap).

from which:
A 12" pine, bears S8°E, 53.30 ft., mkd E1/16 S14 BT, with X cut in tree below BT tag.
An 8" pine, bears S46°E, 85.45 ft., mkd. E1/16 S14 BT.
Set carsonite post with location tag in fence line, bears S11°W, 40.83 ft.

2. Found a 3 1/4 inch aluminum cap 16 ins. below surface, east of a 8x6 inch creosote fence corner post.
A 13 inch ponderosa pine S52°E (record S46°E), 85.45 ft. with well healed face.
A 15 inch ponderosa pine S8°E, 53.30 ft. with well healed face.
3. Reburied monument with 4 ft lath sticking above ground with flagging.
Put aluminum nails at record distances.
Repainted rings and blazes and put up new BT tags and steel guard post 3 ft. south with LSM and Boundary decals.



MAGNETIC DECLINATION - 16° EAST



SKETCH OF CORNER

CERTIFICATION
I, CURT HECKROTH *Curt Heckroth*
certify the information shown above is true and correct.
Signature Ground Party Chief
I, LAWRENCE A. GLAHE *Lawrence A. Glahe*
certify that this Corner Record correctly represents work performed by me or under my direction in compliance with the "Corner Recordation Act" (70-27-01 et seq., M.C.A.)
Signature Land Surveyor
Date: 1-25-12 No. 9748 LS
Employer: GLAHE & ASSOCIATES, INC.

Office of Clerk and Recorder, County of Lincoln. This "corner record" was filed for 224128 BOOK: CCR CC&R'S PAGE: 11380 Pages: 1
STATE OF MONTANA LINCOLN COUNTY
was noted on the CIRECORDED: 01/27/2010 12:49 KOI: CC&R'S
TAMMY D. LAUER CLERK AND RECORDER
book No. FEE: \$0.00 BY: *Tammy D. Lauer*
NO: FILED

Cross Index No. J-20 T. 37N R. 28W PMM

Adopted July 1, 1981, Montana Board of Professional Engineers & Land Surveyors

