

# CERTIFIED CORNER RECORDATION

Corner C.W.E.SE 1/256 Sec 11 T. 37N R. 28W P.M.M. Lincoln County

1. Record from Certificate of Survey No. 1467 by 2989ES: Set a 5/8 inch rebar with plastic cap.

1989 Certified Corner Recordation by MT Reg. No. 2734S: Found a 1 inch yellow plastic cap on a 5/8 inch rebar set flush with the ground. No bearing trees were found.

## New BTs:

An 8 inch pine bears N30°W, 21.05 ft. scribed C W E SE 1/256 S11 BT.  
An 8 inch fir bears N77°E, 34.10 ft. scribed C W E SE 1/256 S11 BT.  
Set a USDA steel post 3 ft. west.

2. Found 5/8 inch rebar with smashed cap and steel post 3 ft. west with LSM and Boundary decals.

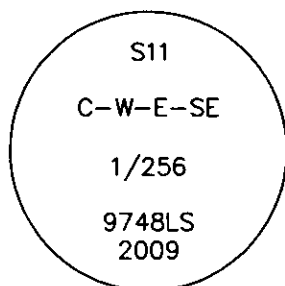
A 10 inch douglas fir N82°E, (record N77°E) 34.10 ft. with well healed face.  
Rotted stump remains N30°W 21.05 ft., no scribing.

3. Flagged rebar and 6x8 inch fence corner.

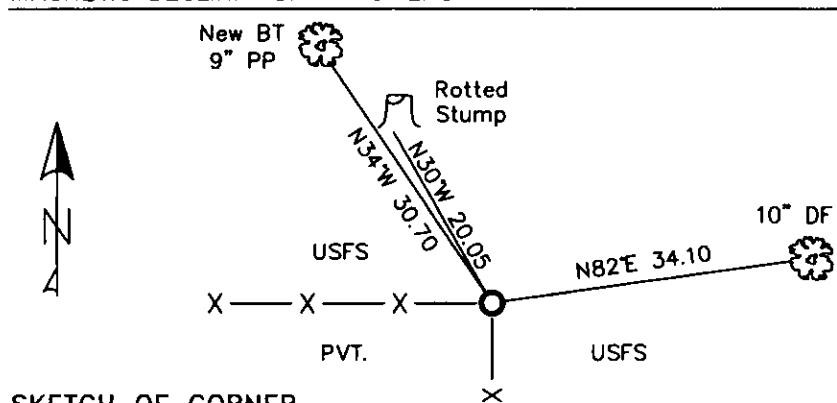
Put a USDA 3 1/4 inch aluminum cap on existing 5/8 inch rebar.  
Put aluminum nail at record distance and repainted ring and blaze on existing BT and put up new BT tag.

## Established new bearing tree:

A 9 inch ponderosa pine N34°W, 30.70 ft. to aluminum nail in side-center, scribed C W E SE 1/256 S11 BT.



MAGNETIC DECLINATION - 16° EAST



SKETCH OF CORNER

CERTIFICATION  
I, CURT HECKROTH *Curt Heckroth*  
certify the information shown is true and correct.  
Signature Ground Party Officer  
I, LAWRENCE A. GLAHE *LAWRENCE A. GLAHE*  
certify that this Corner Record correctly represents work performed by me or under my direction in compliance with the "Corner Recordation Act" (7-12-10), et seq. (M.S.A.)  
Signature of Surveyor  
9748 LS  
Date: 1-25-10  
Employer: GLAHE & Associates, Inc.

Office of Clerk and Recorder, County of Lincoln. This "corner

record" was filed 224127 BOOK: CCR CC&R'S PAGE: 11379 Pages: 1

STATE OF MONTANA LINCOLN COUNTY

was noted on the RECORDED: 01/27/2010 12:49 KOI: CC&R'S

TAMMY D. LAUER CLERK AND RECORDER

book No.        FEE: \$0.00

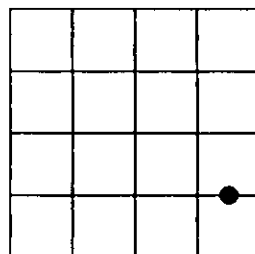
BY: *Tammy D. Lauer*

"O: FILED

Cross Index No. H-20 1/4 T. 37N R. 28W PMM

Adopted July 1, 1981, Montana Board of Professional Engineers & Land Surveyors

Sec. 11



● corner this sheet