

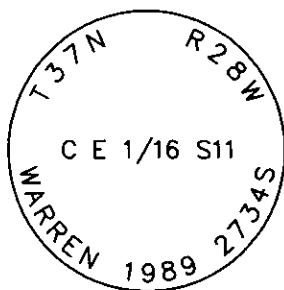
# CERTIFIED CORNER RECORDATION

Corner C E 1/16 Section 11 T. 37N R. 28W P.M.M. Lincoln County

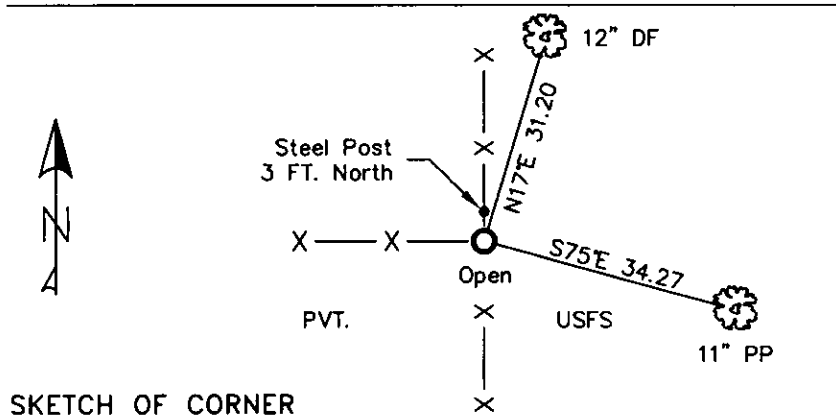
1. 1989 Certified Corner Recordation by MT Reg. No. 2734S: Set a standard Forest Service 3 1/4 inch alum. cap on a 5/8 inch rod 26 inches into the ground;

from which:

- A 7 inch pine bears S75°E, 34.27 feet scribed C E 1/16 S11 BT.
  - A 7 inch fir bears N16°E, 31.20 feet scribed C E 1/16 S11 BT.
  - Set a USDA steel post 3 feet south of corner.
2. Found 3 1/4 inch USDA aluminum cap, 2 ins. out of ground next to fence line going north and west; steel guard post is gone.  
A 12 inch douglas fir N17°E, 31.20 ft. with a well healed face.  
An 11 inch ponderosa pine S75°E, 34.27 ft. with a well healed face.
  3. Stacked and painted a small mound of stone around monument.  
Put aluminum nails at record distance and repainted rings and blazes on BTs.  
Put up new BT tags.  
Put a steel post with LSM and Boundary Tags 3 ft. north of corner.



MAGNETIC DECLINATION - 16° EAST



CERTIFICATION

I, CURT HECKROTH *Curt Heckroth*  
certify the information shown is true and correct.

Signature Ground Party: *Curt Heckroth*

I, LAWRENCE A. GLAHE *Lawrence A. Glahe*  
certify that this Corner Recordation was performed by me or under my direct supervision in compliance with the "Corner Recordation Act" (MCA 17-22-101, et seq., M.S.A.)

Signature: *Lawrence A. Glahe*

Date: 1-25-10 9748 LS

Employer: GLAHE & ASSOCIATES

REGISTERED SURVEYOR

SKETCH OF CORNER

Office of Clerk and Recorder, County of Lincoln. This "corner

record" was fil 224125 BOOK: CCR CC&R'S PAGE: 11377 Pages: 1

STATE OF MONTANA LINCOLN COUNTY  
was noted on RECORDED: 01/27/2010 12:47 KOI: CC&R'S

TAMMY D. LAUER CLERK AND RECORDER

book No. FEE: \$0.00

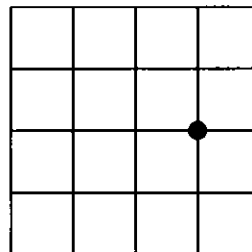
BY: *Lawrence A. Glahe*

NO: FILED

Cross Index No. G-20 T. 37N R. 28W PMM

Adopted July 1, 1981, Montana Board of Professional Engineers & Land Surveyors

Sec. 11



● corner this sheet