

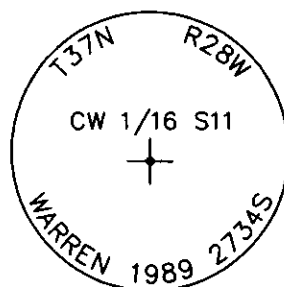
CERTIFIED CORNER RECORDATION

Corner C W 1/16 Sec. 11 T. 37N R. 28W P.M.M. Lincoln County

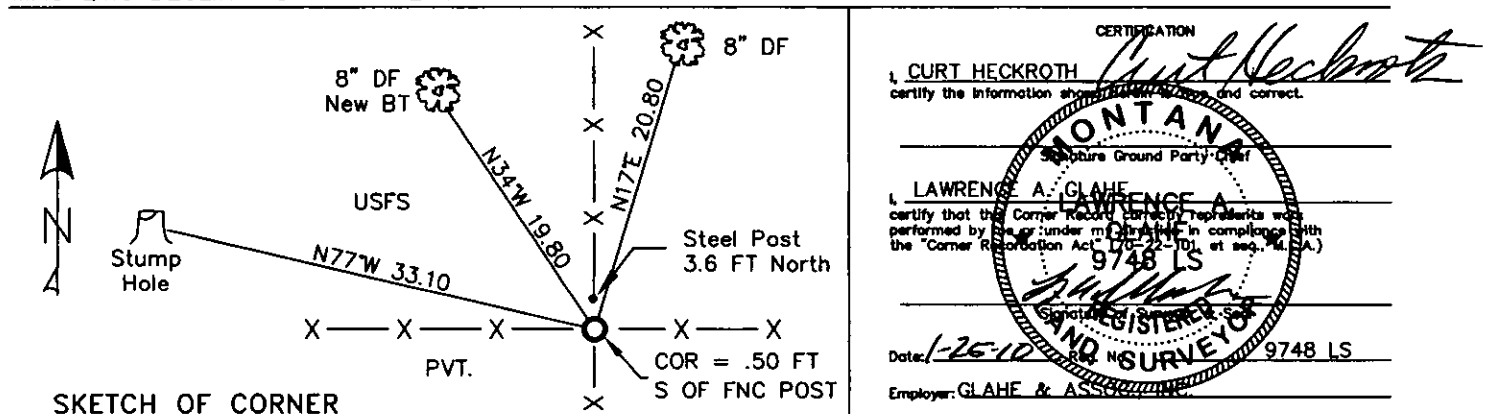
1. 1989 Certified Corner Recordation by H. Gene Warren MT Reg. No. 2734S:
Found a 5/8 inch rebar with a 1 inch yellow plastic cap marked K.E.D. 4975S.
Removed 5/8 inch rebar and in its place set a standard 3 1/4 inch Forest Service aluminum cap on 5/8 inch rod 26 inch into the ground;

from which:

- A 6 inch fir bears N17°E 20.80 ft. scribed C W 1/16 S11 BT.
 - A 8 inch pine bears N77°W 33.10 ft. scribed C W 1/16 S11 BT.
 - Set a USDA steel post 3 ft. north of corner.
2. Found 3 1/4 inch USDA aluminum monument 4 ins. out of ground.
An 8 inch douglas fir N17°E 20.80 ft with well healed face.
A stump hole N77°W 33.10 ft.
A steel post with LSM and Boundary decals 3.60 ft. north of corner.
 3. Stacked and painted small mound of stones around monument.
An 8 inch douglas fir N34°W 19.80 ft. scribed CW 1/16 S11 BT.
Put aluminum nail at record distance and repainted ring and blaze on existing BT.
Tags are good.



MAGNETIC DECLINATION - 16° EAST



Office of Clerk and Recorder, County of Lincoln. This "corner

record" was fi 224124 BOOK: CCR CC&R'S PAGE: 11376 Pages: 1

was noted on RECORDED: 01/27/2010 12:46 KOI: CC&R'S in

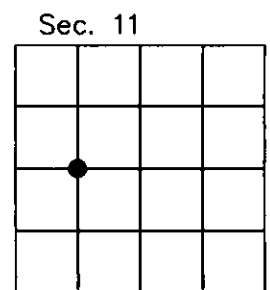
book No. TAMMY D. LAUER CLERK AND RECORDER

FEE: \$0.00 BY: [Signature]

TO: FILED

Cross Index No. G-18 T. 37N R. 28W PMM

Adopted July 1, 1981, Montana Board of Professional Engineers & Land Surveyors



● corner this sheet