

# CERTIFIED CORNER RECORDATION

Corner West 1/4 Sec. 11 T. 37N R. 28W P.M.M. Lincoln County

1. 1884 original survey by F. Sizer and A. Jaqueth: Set a slatestone on 14x10x4 ins. 10 ins. into the ground for 1/4 section corner marked 1/4 on west face,

from which:

- A 18 inch fir bears S36°E 48 lks. mkd. 1/4 S BT.
- An 8 inch fir bears S 1/2°W 44 lks. mkd. 1/4 S BT.

1968 remonumentation by BLM: Set an iron post 30 ins. long 2 1/2 ins. diam. 24 ins. into the ground, with brass cap,

from which the original BTs:

- A 22 inch stump bears S 36°E 48 lks. mkd. BT (record).
- A 16 inch stump bears S 1/2°W 44 lks. mkd. BT (record).

the new BTs:

- A 5 inch pine bears S83°E 16 lks. mkd. 1/4 S11 BT.
- A 6 inch fir bears N49°W 54 lks. mkd. 1/4 S10 BT.
- Buried original along side iron post.

1989 Certified Corner Recordation by H. Gene Warren MT Reg. No. 2734S:  
Found a 3 1/4 inch brass cap 8 inch out of ground,

from which:

- A 22 inch stump bears S35°E 31.61 ft. mkd. BT.
- A 16 inch stump bears S 1/2°E 29.50 ft mkd. BT.
- A 6 inch pine bears S83°E 11.50 ft. scribe overgrown.
- A 7 inch fir bears N48°W 36.00 ft. scribe overgrown.
- Maintained BT's with required signs and paint, also set a USDA steel post 3 ft. east.

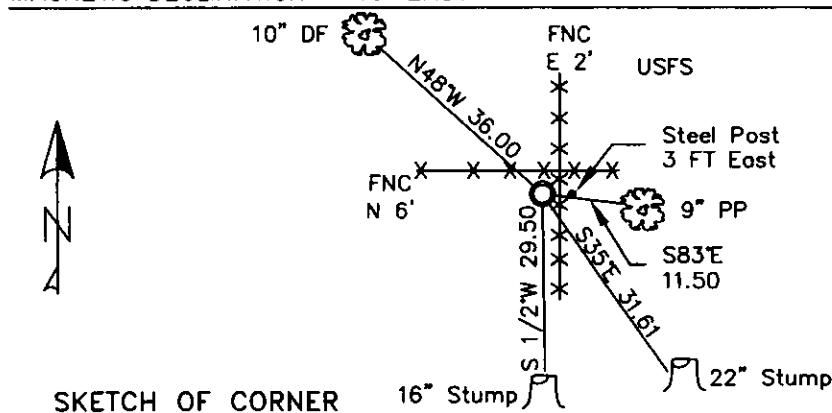
2. Found a 3 1/4 inch BLM brass monument 8 ins. out of ground surrounded by small scattered mound of stone.

- A 22 inch stump S35°E 31.61 ft. BT visible (GLO).
- A 16 inch stump S 1/2°W 29.50 ft. BT visible (GLO).
- A 9 inch ponderosa pine S 83°E 11.50 ft. well healed face.
- A 10 inch douglas fir N48°W 36.00 ft. well healed face.
- Distance to existing nail in side center steel post 3 ft. east, smashed.

3. Restacked and repainted stones around monument.

Repainted blazes and rings on BLM BTs, put aluminum nail at record distance on ponderosa pine, painted faces on GLO stumps. All tags and signs are in good condition. Put new steel post with LSM and Boundary Decals 3 ft. east of corner.

MAGNETIC DECLINATION - 16° EAST



CERTIFICATION

I, CURT HECKROTH *Curt Heckroth*  
certify the information shown on this map is true and correct.

Signature Ground Party Chief

I, LAWRENCE A. GLAHE *LAWRENCE A. GLAHE*  
certify that this Corner Record correctly represents work performed by me or under my direction in compliance with the "Corner Recordation Act" (50-22-101 et seq., M.C.A.)

Date: 1-25-10 No. 9748 LS

Employer: GLAHE & ASSOC., INC.

Office of Clerk and Recorder, County of Lincoln. This "corner

record" was filed for r. 224123 BOOK: CCR CC&R'S PAGE: 11375 Pages: 1

STATE OF MONTANA LINCOLN COUNTY

was noted on the cross RECORDED: 01/27/2010 12:45 KOI: CC&R'S

TAMMY D. LAUER CLERK AND RECORDER

book No.            FEE: \$0.00

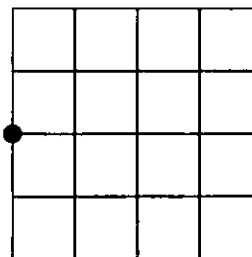
BY: *Heanree Lenoir*

TO: FILED

Cross Index No. G-17 T. 37N R. 28W PMM

Adopted July 1, 1981, Montana Board of Professional Engineers & Land Surveyors

Sec. 11



● corner this sheet