

CERTIFIED CORNER RECORDATION

Corner Cor. for Secs. 9 & 16 T. 37N R. 28W P.M.M. Lincoln County

1. 1894 Original Survey by F. Sizer and A. Jaqueth: Set a limestone 14x12x10 ins., 10 ins. in the ground for corner to Sec. 8, 9, 16, and 17, marked with 4 notches on south and east edges, from which:
- A 16 inch tamarack bears N19°E, 53 lks. mkd. T37N R28W S9 BT.
  - A 5 inch fir bears S59°45'E, 20 lks. mkd. T37N R28W S16 BT.
  - An 18 inch tamarack bears S57°W, 40 lks. mkd. T37N R28W S17 BT.
  - A 16 inch tamarack bears S5°30'W, 20 lks. mkd. T37N R28W S8 BT.

1930 Resurvey by R. Lyman: The old corner for sections 8, 9, 16 and 17 which is a stone 12x12x12 ins. above the ground mkd. and witnessed as described in the official records, except the NE BT is cut. Since this corner will refer to section 9 and 16 only I erased the marks from the BTs west of the corner and mkd. a new BT as follows, A 12 inch fir bears N40°E 16 lks. mkd. T37N R28W S9 BT.

1969 Remonumentation by BLM: The corner of sec. 9 and 16, as determined from the remains of the original BTs;

- A stump bears N40°E, 60 lks. mkd. BT.
  - A stump bears N19°E, 53 lks. mkd. BT.
  - A larch snag 20 ins. diam. bears S59°45'E, 20 lks. mkd. 37N R28W S16 BT.
  - A larch 18 ins. diam. bears N55 1/2°W, 20 lks. with defaced scribing at the corner point;
- Set an iron post, 30 ins. long, 2 1/2 ins. diam., 24 ins. in the ground, with brass cap, from which;
- A fir 8 ins. diam. bears N42°E, 139 lks. mkd. T37N R28W S9 BT.
  - A fir 12 ins. diam. bears S5°E, 80 lks. mkd. T37N R28W S16 BT.

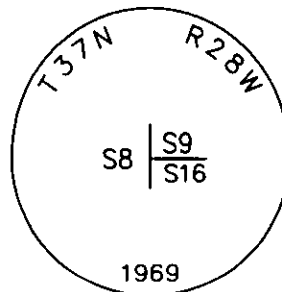
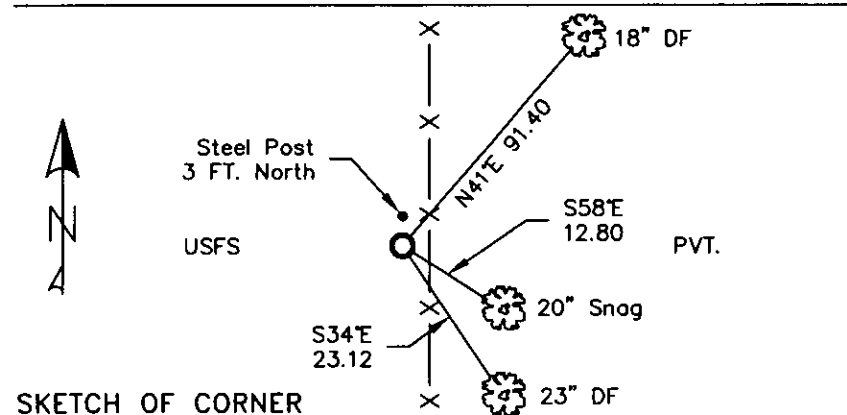
1989 Certified Corner Recordation by H. Gene Warren MT Reg. No. 2734S: Found a 3 1/2 inch BLM brass cap,

- from which;
- A 20 inch larch snag bears S58°E, 12.80 ft. mkd. T37N R28W.
  - An 18 inch fir bears S34°E, 23.12 ft. with overgrown scribe.
  - A 12 inch fir snag bears S5°E, 53.0 ft. mkd. T37N R28W S16 BT.
  - An 11 inch fir bears N41°E, 91.40 ft. mkd. with overgrown scribe.
  - A stump bears N19°E, 35.0 ft., no visible mks.
  - A stump bears N40°E, 39.65 ft., no visible mks.
- Maintained BTs with required signs and paint, set a 6 foot steel post 3 feet north of monument.

2. Found 3 1/4 inch BLM brass monument 6 ins. out of ground, from which;
- A 20 inch snag S58°E, 12.80 ft. T37N R28W visible.
  - A 23 inch douglas fir S34°E, 23.12 ft. with a well healed face.
  - An 18 inch douglas fir N41°E, 91.40 ft. with well healed face.
  - A rotted stump N19°E, 35 ft.
  - A rotted stump N40°E, 39.65 ft.
  - A steel post with LSM and Boundary decals 3 ft. north.

3. Stacked a small mound of stone around monument, BT tags are good. Repainted rings and blazes on BTs.

MAGNETIC DECLINATION - 16° EAST



CERTIFICATION

I, CURT HECKROTH, certify the information shown is true and correct.

Signature: *Curt Heckroth*

Signature Ground Party: *Lawrence A. Glahe*

I, LAWRENCE A. GLAHE, certify that the Corner Recordation was performed by me or under my direction in compliance with the "Corner Recordation Act" (74-121401, et seq., M.C.A.).

9748 LS

DATE: 1-25-10

EMPLOYER: GLAHE & ASSOC., INC.

9748 LS

Office of Clerk and Recorder. County of Lincoln. This "corner

record" was filed for r 224122 BOOK: CCR CC&R'S PAGE: 11374 Pages: 1

STATE OF MONTANA LINCOLN COUNTY

was noted on the cro: RECORDED: 01/27/2010 12:44 KOI: CC&R'S

book No. TAMMY D. LAUER CLERK AND RECORDER

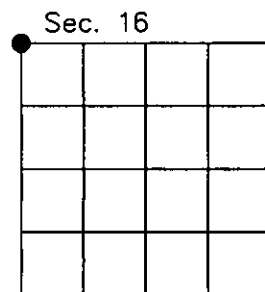
FEE: \$0.00

NO: FILED

BY: *Deanne K. Lauer*

Cross Index No. J-9 T. 37N R. 28W PMM

Adopted July 1, 1981, Montana Board of Professional Engineers & Land Surveyors



● corner this sheet