

CERTIFIED CORNER RECORDATION

Corner East 1/4 Cor. Sec. 8 T. 37N R. 28W P.M.M. Lincoln County

1. 1894 Original Survey by F. Sizer and A. Jaqueth: Set a limestone 14x10x10 ins., 10 ins. in the ground for 1/4 section corner marked 1/4 on west face,

from which;

- A pine 20 ins. diam. bears N13 1/4°W, 23 lks. mkd. 1/4 S BT.
- A tamarack 5 ins. diam. bears N41 1/2°E, 51 lks. mkd. 1/4 S BT.

Remonumentation by GLO 1930: Set an iron post 30 inches long, 1 inch in diam. 28 inches in the ground, for 1/4 section corner, section 8 only,

from which;

- A fir 14 ins. diam. bears S34 1/2°W, 69 lks. mkd. 1/4 S8 BT.
- A fir 16 ins. diam. bears N56 1/2°W, 83 lks. mkd. 1/4 S8 BT.

Maintained by BLM 1969: Found brass cap for 1/4 section 8 only,

from which;

- A 20 inch fir bears S34 1/2°W, 69 lks. mkd. 1/4 S8 BT.
- A 15 inch fir snag bears N56 1/2°W, 87 lks. mkd. 1/4 S8 BT.

The new BT;

- A 12 inch fir bears S85°E, 29 lks. mkd. 1/4 S8 BT.
- Added marks 1969 to brass cap.

1989 Certified Corner Recordation by H. Gene Warren MT Reg. No. 2734S: Found a 2 1/2 inch brass cap,

from which;

- A 16 inch fir bears N80°W, 18.75 feet, scribe overgrown (record S85°E).

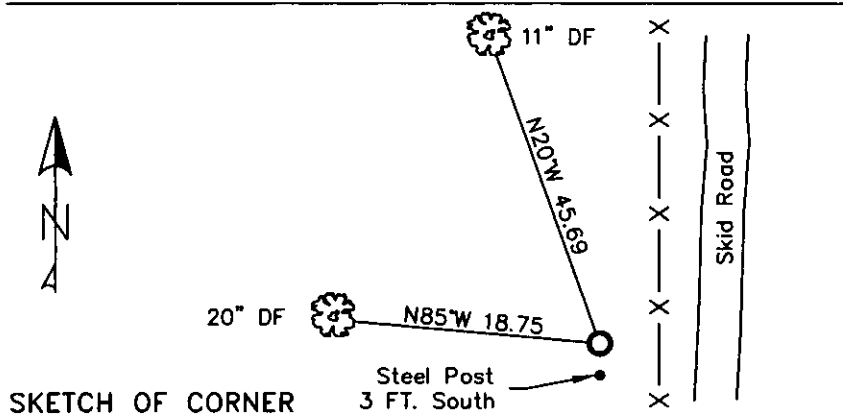
New BT;

- An 8 inch fir bears N20°W, 45.69 feet, scribed 1/4 S8 BT.
- Maintained found BT with required signs and paint. Set a 6 foot steel post 3 feet south.

- 2. Found 2 1/2 inch GLO brass monument 4 ins. out of ground.
  - A 20 inch douglas fir N85°W, (record S85°E and N80°W) 18.75 ft. with well healed face.
  - An 11 inch douglas fir N20°W, 45.69 ft. with well healed face.
  - A steel post 3 ft. south with Boundary decal.

- 3. Stacked and painted a small mound of stone around monument.
  - Repainted rings and blazes and put aluminum nails at record distances.
  - Put new BT tag on 20 inch douglas fir.
  - Put LSM decal on steel post.

MAGNETIC DECLINATION - 16°



CERTIFICATION

I, CURT HECKROTH *Curt Heckroth*  
certify the information shown is true and correct.

Signature Ground Party Chief

LAWRENCE A. GLAHE  
certify that this corner record correctly represents work performed by me or under my direct supervision in compliance with the "Corner Restoration Act" (MCA 82-1-101 et seq. M.C.A.)

9748 LS

Date: 1-25-01 No. 9748 LS

Employer: GLAHE & ASSOCIATES

Office of Clerk and Recorder, County of Lincoln This "corner

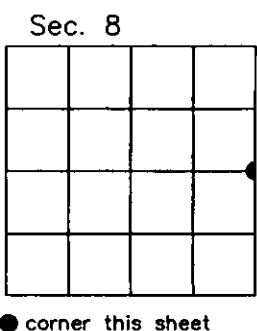
record" was filed for rec 224121 BOOK: CCR CC&R'S PAGE: 11373 Pages: 1

was noted on the cross RECORDED: 01/27/2010 12:43 KOI: CC&R'S

book No. TAMMY D. LAUER CLERK AND RECORDER  
FEE: \$0.00 BY: *Tammy D. Lauer*  
TO: FILED

Cross Index No. G-9 T. 37N R. 28W PMM

Adopted July 1, 1981, Montana Board of Professional Engineers & Land Surveyors



● corner this sheet