

CERTIFIED CORNER RECORDATION

Corner West 1/4 Section 9 T. 37N R. 28W P.M.M. Lincoln County

1. 1894 Original Survey by F. Sizer and A. Jaqueth: Set a limestone 14x10x10 ins. 10 ins. in the ground for 1/4 section corner marked 1/4 on west face,

from which;

- A pine 20 ins. diam. bears N13 1/4°W, 23 lks. mkd. 1/4 S BT.
- A tamarack 5 ins. diam. bears N41 1/2°E, 51 lks. mkd 1/4 S BT.

GLO 1930: The old 1/4 section corner, which is a limestone 10x10x8 ins. above ground marked and witnessed as described in the official record, except that the NE bearing tree is cut.

Since this 1/4 section corner will now refer to section 9 only, I erase the marks from the bearing trees; and mark new bearing trees as follows;

- A fir 8 ins. diam. bears N29°E, 57 lks. mkd. 1/4 S9 BT.
- A tamarack 14 ins. diam. bears S11°E, 71 lks. mkd. 1/4 S9 BT.

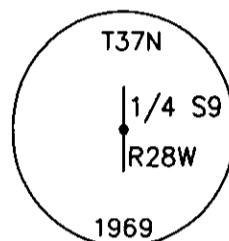
Remonumentation BLM 1969: Set an iron post 30 inches long, 2 1/2 ins. diam. 24 inches in the ground with brass cap,

from which:

- A fir 12 ins. diam. bears N29°E, 57 lks. mkd. 1/4 S9 BT.
- A stump bears S11°E, 71 lks. mkd. 1/4 S9 BT.

The new BT;

- A fir 8 ins. diam., bears S31°E, 71 lks. mkd. 1/4 S9 BT.
- Buried stone alongside iron post.



1989 Certified Corner Recordation by H. Gene Warren MT Reg. No. 2734S: Found a poorly set 3 1/4 inch BLM brass cap set 4 inches into the ground, reset monument in mound of earth and stone,

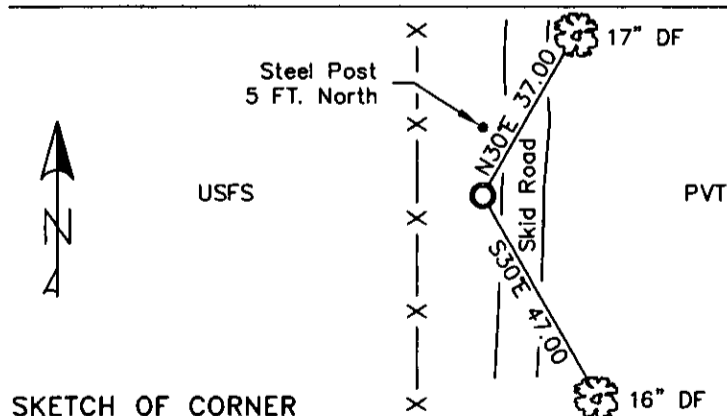
from which;

- A 13 inch fir bears N30°E, 37.0 feet, scribe overgrown.
- A 10 inch fir bears S30°E, 47.0 feet, scribe overgrown.
- Maintained BTs with required signs and paint.
- Set a 6 foot steel post 3 feet north.

2. Found 3 1/4 inch BLM brass monument 12 ins. out of ground surrounded by a mound of stone.
 - A 17 inch douglas fir N30°E, 37.00 ft. with well healed face.
 - A 16 inch douglas fir S30°E, 47.00 ft. well healed face.
 - A steel post with LSM and Boundary decals 5 ft. north.

3. Restacked and painted stones around monument.
 - Put aluminum nails at record distances.
 - Repainted blazes and rings on BTs, all signs and tags are in good shape.

MAGNETIC DECLINATION - 16° EAST



CERTIFICATION

I, CURT HECKROTH *Curt Heckroth*
certify the information shown is true and correct.

I, LAWRENCE A. GLAHE *Lawrence A. Glahe*
certify that this Corner Recordation was performed by me or under my direct supervision in compliance with the "Corner Recordation Act" (MCA 17-1-101, et seq., MCA.)

Date: 12/24/10 9748 LS
Employer: GLAHE & ASSOCIATES, INC.

REGISTERED LAND SURVEYOR

SKETCH OF CORNER

Office of Clerk and Recorder, County of Lincoln. This "corner

record" was filed for r. 224120 BOOK: CCR CC&R'S PAGE: 11372 Pages: 1

STATE OF MONTANA LINCOLN COUNTY

was noted on the cross RECORDED: 01/27/2010 12:42 KOI: CC&R'S

TAMMY D. LAUER CLERK AND RECORDER

book No. FEE: \$0.00

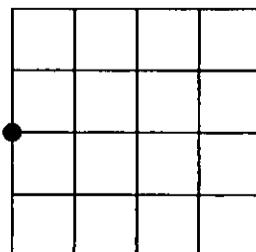
BY: *Lawrence A. Glahe*

"O: FILED

Cross Index No. G-9 T. 37N R. 28W PMM

Adopted July 1, 1981, Montana Board of Professional Engineers & Land Surveyors

Sec. 9



● corner this sheet