

CERTIFIED CORNER RECORDATION

Corner Northwest Cor. Sec. 9 T. 37N R. 28W P.M.M. Lincoln County

1. 1894 Original Survey by F. Sizer and A. Jaqueth: Set a sandstone 14x8x6 ins. 10 ins. in the ground for corner to sections 4, 5, 8, and 9 marked with 5 notches on south and 4 notches east edges,

from which;

- A tamarack 14 ins. diam. bears N49°E, 34 lks. marked T37N R28W S4 BT.
- A tamarack 12 ins. diam. bears S36 1/2°E, 45 lks. marked T37N R28W S9 BT.
- A tamarack 16 ins. diam. bears S50 1/2°W, 24 lks. marked T37N R28W S8 BT.
- A tamarack 18 ins. diam. bears N65 1/2°W, 50 lks. marked T37N R28W S5 BT.

Remonumentation BLM 1969: For the corner of sections 4 & 9, monumented with a sandstone of record size, firmly set, marked as stated in original record and witnessed by the remains of the original bearing trees;

- A stump bears N49°E, 34 lks. with no visible marks.
- A larch snag 16 ins. diam. bears S36 1/2°E, 45 lks. mkd. T37N R28W S9 BT.
- Set an iron post 30 ins. long, 2 1/2 ins. diam. 24 ins. in the ground,

from which;

- A fir 9 ins. diam. bears N31°E, 45 lks. mkd. T37N R28W S4 BT.
- A larch 8 ins. diam. bears S50°E, 48 lks. mkd. T37N R28W S9 BT buried original stone alongside the iron post.

1989 Certified Corner Recordation by H. Gene Warren MT Reg. No. 2734S: Found a 3 1/4 inch brass cap,

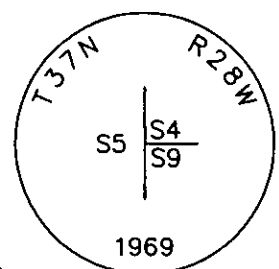
from which;

- A 14 inch stump bears N49°E, 23.15 feet with no visible marks.
- A 16 inch larch snag bears S41°E, 29.20 feet mkd. T37N R28W S9 BT.
- A 9 inch fir bears N32°E, 29.75 feet scribe overgrown.
- An 8 inch larch bears S50°E, 31.60 feet scribe overgrown.
- Maintained BTs with required signs and paint, set a 6 foot steel post 3 feet north.

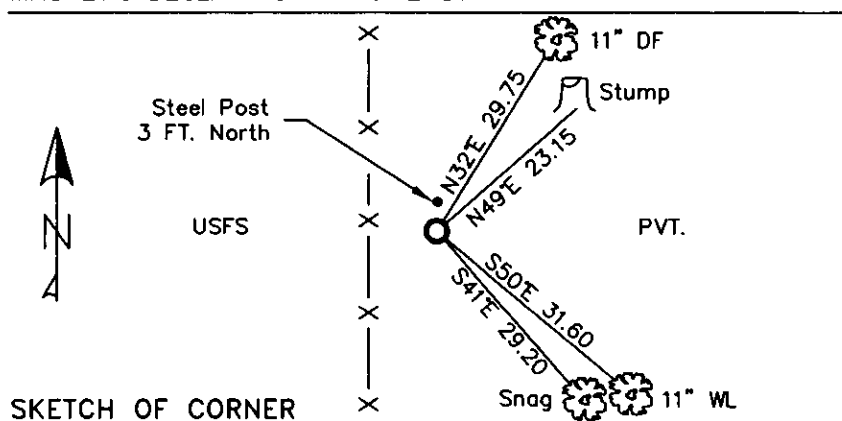
2. Found 3 1/4 inch BLM brass monument 8 ins. out of ground.

- A rotted stump N49°E, 23.15 ft.
- A 16 inch snag S41°E, 29.20 ft., illegible scribing visible.
- An 11 inch douglas fir N32°E, 29.75 ft., with well healed face.
- An 11 inch western larch S50°E, 31.60 ft. well healed face.
- A steel post with LSM and Boundary decals 3 ft. north.

3. Stacked and painted a small mound of stone around monument.
- Put aluminum nails at record distances and repainted rings and blazes on BTs.
All tags and signs are in good shape.



MAGNETIC DECLINATION - 16° EAST



CERTIFICATION

I, CURT HECKROTH *Curt Heckroth*
certify the information shown is true and correct.

Signature Ground Party Chief

I, LAWRENCE A. GLAHE *Lawrence A. Glahe*
certify that this Corner Recordation was performed by me or under my direct supervision in compliance with the "Corner Recordation Act" (76-221, et seq., M.C.A.)

9748 LS

DATE: 1-25-10 No. 9748 LS

Employer: GLAHE & ASSOCIATES

Office of Clerk and Recorder, County of Lincoln. This "corner

record" was filed for rec 224119 BOOK: CCR CC&R'S PAGE: 11371 Pages: 1

STATE OF MONTANA LINCOLN COUNTY

was noted on the cross-RECORDED: 01/27/2010 12:41 KOI: CC&R'S

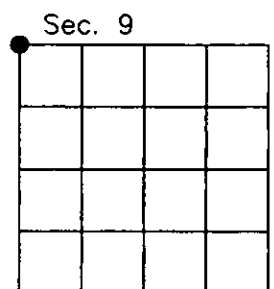
TAMMY D. LAUER CLERK AND RECORDER

book No. _____ FEE: \$0.00

TO: FILED

Cross Index No. E-9 T. 37N R. 28W PMM

Adopted July 1, 1981, Montana Board of Professional Engineers & Land Surveyors



● corner this sheet