

CERTIFIED CORNER RECORDATION

Corner Northeast Cor. Sec. 8 T. 37N R. 28W P.M.M. Lincoln County

1. 1894 Original Survey by F. Sizer and A. Jaqueth: Set a sandstone 14x8x6 ins. 10 ins. in the ground for corner to sec. 4, 5, 8, and 9 marked with 5 notches on south and 4 notches on east edges,

from which;

- A tamarack 14 ins. diam. bears N49°E, 34 lks. mkd. T37N R28W S4 BT.
- A tamarack 12 ins. diam. bears S36 1/2°E, 45 lks. mkd. T37N R28W S9 BT.
- A tamarack 16 ins. diam. bears S50 1/2°W, 24 lks. mkd. T37N R28W S8 BT.
- A tamarack 18 ins. diam. bears N65 1/2°W, 50 lks. mkd. T37N R28W S5 BT.

Remonumentation GLO 1930: Set an iron post 30 ins. long, 2 ins. diam., 28 ins. in the ground for corner of sections 5 and 8 only,

from which;

- A fir 4 ins. diam. bears S67°W, 29 lks. mkd. T37N R28W S8 BT.
- A tamarack 6 ins. diam. bears N72°W, 43 lks. mkd. T37N R28W S5 BT.

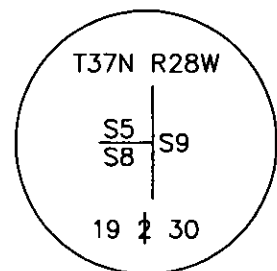
1989 Certified Corner Recordation by H. Gene Warren MT Reg. No. 2734S: Found a GLO 2 1/2 inch brass cap buried 4 inches under ground in the edge of a skid trail,

from which;

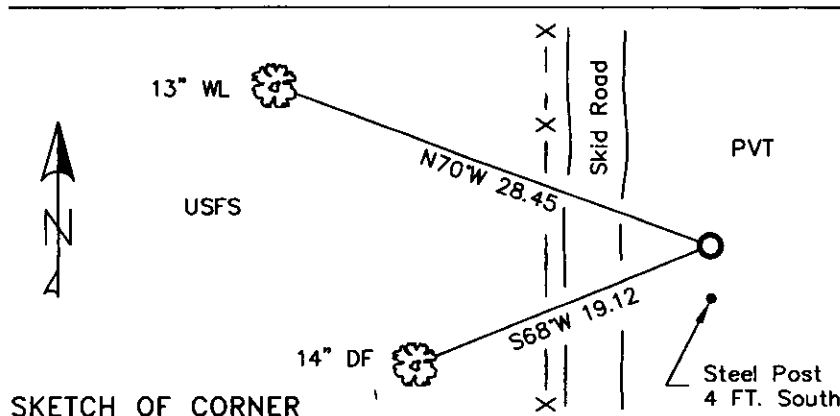
- A 12 inch fir bears S68°W, 19.12 feet mkd. T37N R28W S8 BT.
- A 12 inch larch bears N70°W, 28.45 feet mkd. T37N R28W S5 BT.
- Maintained BTs with required signs and paint, set a 6 foot steel post 4 feet south.

2. Found 2 1/2 inch GLO brass monument on edge of skid road.
 - A 14 inch douglas fir S68°W, 19.12 ft. partially open face illegible scribing visible.
 - A 13 inch western larch N70°W, 28.45 ft. open face 37N R28W S visible.
 - Steel post with LSM and Boundary decals 4 ft. south.

3. Stacked and painted a small mound of stone around monument.
 - Put aluminum nails at record distances repainted rings and blazes.
 - BT tags and signs are in good shape.



MAGNETIC DECLINATION 16° EAST



CERTIFICATION

I, CURT HECKROTH *Curt Heckroth*
 certify the information shown here is true and correct.

LAWRENCE A. GLAHE
 certify that the Corner Location represents work performed by me or under my direction in compliance with the "Corner Recordation Act" (Public Law 96-401, et seq., 43 U.S.C. 1631-1634).

9748 LS
 Registered Professional Engineer and Land Surveyor

Date: 1-25-10 9748 LS
 Employer: GLAHE & ASSOC.

Office of Clerk and Recorder, County of Lincoln. This "corner

record" was filed for record c 224118 BOOK: CCR CC&R'S PAGE: 11370 Pages: 1

was noted on the cross-index STATE OF MONTANA LINCOLN COUNTY
RECORDED: 01/27/2010 12:40 KOI: CC&R'S

book No. TAMMY D. LAUER CLERK AND RECORDER

FEE: \$0.00

TO: FILED

Cross Index No. E-9 T. 37N R. 28W PMM

Adopted July 1, 1981, Montana Board of Professional Engineers & Land Surveyors

Sec. 8			

● corner this sheet