

CERTIFIED CORNER RECORDATION

Corner NW Corner Sec. 4 T. 37N R. 28W P.M.M. Lincoln County

1. 1894 Original Survey by F. Sizer and A. Jaqueth: Set a sandstone 12x12x6 ins. 8 ins. into the ground with 4 notches on south and 2 notches on east edges,

from which;

A 12 inch larch bears S46°W, 51 lks. mkd. T37N R28W S5 CC BT.

(Can not read size of kind in GLO notes) bears S25°45'E, 54 lks. mkd. T37N R28W S4 CC BT.

Remonumentation by BLM 1969: Found original stone lying loose on ground,

A stump bears S25°45'E, 54 lks. mkd. N R28W S4 CC BT.

An 18 inch larch bears S46°W, 51 lks. mkd. 37 R28W S5 CC BT.

At the corner point, set an iron post 30 inches long 2 1/2 ins. diam. 24 ins. into the ground, with brass cap,

from which;

A 6 inch fir bears S53 1/4°E, 64 lks. mkd. T37N R28W S4 CC BT.

A 4 inch fir bears S61°W, 55 lks. mkd. X BT.

Buried original stone alongside.

1989 Certified Corner Recordation by H. Gene Warren MT Reg. No. 2734S: Found a 3 1/4 inch brass cap set 24 ins. into the ground,

from which,

A 10 inch fir bears S54°E, 42.34 feet scribe overgrown.

An 8 inch fir bears S59°W, 36.18 feet scribe overgrown.

A 24 inch larch snag bears S44°W, 34.72 feet scribe unreadable.

A 14 inch stump bears S25°E, 36.00 feet with letters 28W.

Maintained with required signs and paint, set a USDA steel post 18 feet south.

2. Found 3 1/4 inch BLM brass monument 8 ins. out of ground, corner facing west.

A 14 inch stump bears S25°E, 36 ft., illegible scribing.

A 24 inch snag S44°W, 34.72 illegible scribing.

A 15 inch douglas fir S54°E, 42.34 well healed face.

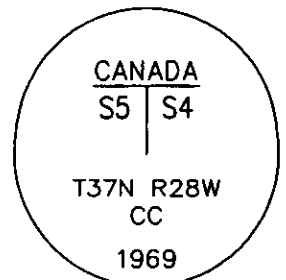
A 14 inch douglas fir stump with tree lying down/cut with a saw S59°W, 36.18 ft.

A steel post with LSM and Boundary decals 18 ft south.

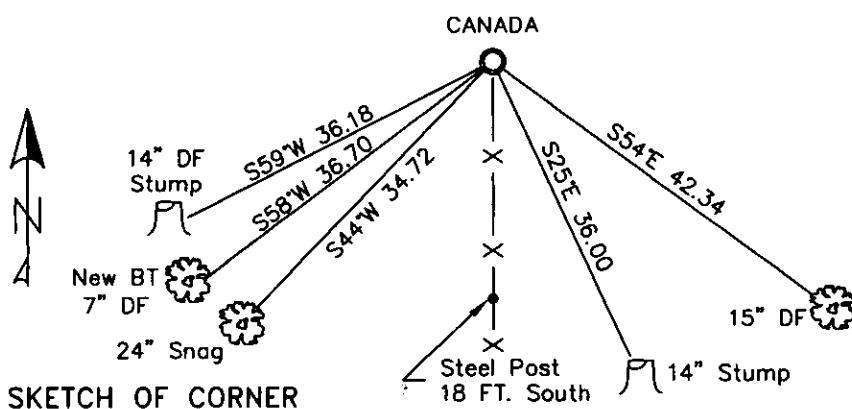
3. Stacked and painted small mound of stone around monument.

New BT 7 inch douglas fir S58°W, 36.70 ft., scribed T37N R28W S5 CC BT.

Repainted rings and blazes tags and signs in good shape.



MAGNETIC DECLINATION - 16° EAST



CERTIFICATION
I, CURT HECKROTH
certify the information shown is true and correct.
Signature: Curt Heckroth
I, LAWRENCE A. GLAHE
certify that this Corner Recordation represents work performed by me or under my direction in compliance with the "Corner Recordation Act" (70-22-101, et seq., M.C.A.)
Signature: Lawrence A. Glahé
Date: 12-5-10
Employer: GLAHE & ASSOCIATES, INC.
9748 LS

Office of Clerk and Recorder, County of Lincoln. This "corner

record" was filed for record or 224117 BOOK: CCR CC&R'S PAGE: 11369 Pages: 1

was noted on the cross-index STATE OF MONTANA LINCOLN COUNTY

book No. RECORDED: 01/27/2010 12:39 KOI: CC&R'S

TAMMY D. LAUER CLERK AND RECORDER

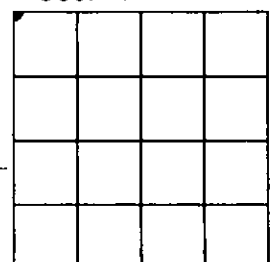
FEE: \$0.00

TO: FILED

Cross Index No. A-9 T. 37N R. 28W PMM

Adopted July 1, 1981, Montana Board of Professional Engineers & Land Surveyors

Sec. 4



● corner this sheet