

CERTIFIED CORNER RECORDATION

Corner North 1/4 of Section 10 T. 37N R. 28W P.M.M. Lincoln County

1. 1894 Original Survey by F. Sizer and A. Jaqueth: Set a sandstone 12x10x5 ins. 8 ins. into the ground for 1/4 section corner marked 1/4 on west face,

from which;

- A fir 12 ins. diam. bears N21 1/2°E, 16 lks. marked 1/4 S BT.
A tamarack 12 ins. diam. bears S50°W, 64 lks. marked 1/4 S BT.

Remonumentation by BLM 1969: Set an iron post 30 inches long, 2 1/2 ins. diam., 24 ins. into the ground, with brass cap,

from which;

- A stump bears N21 1/2°E, 16 lks. marked BT.
A stump bears S50°W, 64 lks. marked BT.

New bearing trees:

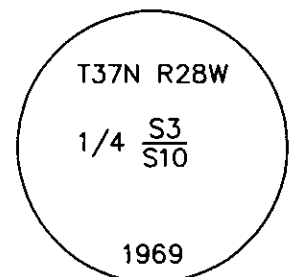
- A fir 9 ins. diam. bears N10 1/2°E, 41 lks. marked 1/4 S3 BT.
A fir 8 ins. diam. bears S1°W, 24 lks. marked 1/4 S10 BT.

1989 Certified Corner Recordation by H. Gene Warren MT. Reg. No. 2734S: Found a 3 1/4 inch brass cap set 22 ins. into the ground,

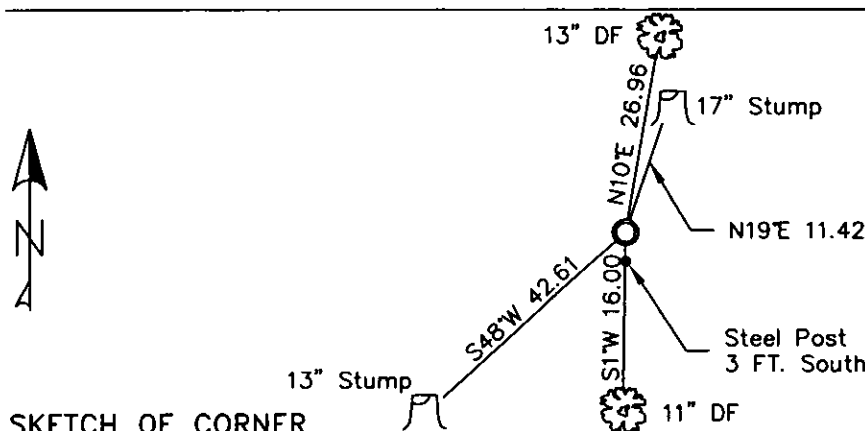
from which,

- An 8 inch fir bears S1°E (record S1°W), 16 feet dist., scribe overgrown.
A 13 inch stump bears S48°W, 42.61 feet with letters BT.
A 17 inch stump bears N19°E, 11.42 feet with letters BT.
A 10 inch fir bears N10°E, 26.96 feet marked 1/4 S3 BT.
Maintained BTs with required signs and paint, set a USDA steel post 3 south of corner.

2. Found 3 1/4 inch BLM brass monument 6 ins. out of ground surrounded by small mound of stone.
A 17 inch rotted stump N19°E, 11.42 ft., partial blaze B visible.
A 13 inch rotted stump S48°W, 42.61 ft., no scribing.
A 13 inch douglas fir N10°E, 26.96 ft. to existing nail, well healed face.
An 11 inch douglas fir S1°W, (record 1969 BLM - record 1989 S1°E) 16.00 to existing nail.
3. Repainted and restacked stones around monument.
Repainted blazes and rings on BTs.
All signs in good shape.



MAGNETIC DECLINATION - 16° EAST



CERTIFICATION
I, CURT HECKROTH *Curt Heckroth*
certify the information shown herein is true and correct.

Signature Ground Party
I, LAWRENCE A. GLAHE
certify that this Corner Recordation represents work performed by me or under my direction in compliance with the "Corner Recordation Act" (70/22-101, et seq., M.C.A.)

9748 LS
REGISTERED LAND SURVEYOR
Date: 1-25-10
Employer: GLAHE & ASSOCIATES, INC.

Office of Clerk and Recorder, County of Lincoln. This "corner

record" was filed for record 224116 BOOK: CCR CC&R'S PAGE: 11368 Pages: 1

was noted on the cross-in: STATE OF MONTANA LINCOLN COUNTY RECORDED: 01/27/2010 12:38 KOI: CC&R'S

book No. TAMMY D. LAUER CLERK AND RECORDER

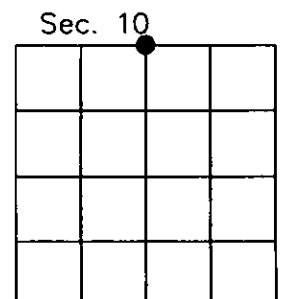
FEE: \$0.00

TO: FILED

BY: *Leanne Dinger*
Spady

Cross Index No. E-15 T. 37N R. 28W PMM

Adopted July 1, 1981, Montana Board of Professional Engineers & Land Surveyors



● corner this sheet