

CERTIFIED CORNER RECORDATION

Corner North 1/4 Cor. Sec. 3 T. 37N R. 28W P.M.M. Lincoln County

1. 1904 Record International Boundary Commission: Latitude 48 59 58.83, Longitude 115 13 37.31 1927 N.A.D.

1989 Certified Corner Recordation by H. Gene Warren MT Reg. No. 2734S: Found a 4 1/2 foot Obelisk 9x9 inches at the base, set in concrete and marked 242 on west face, and painted silver. No bearing trees were found.

New bearing trees:

A fir 7 ins. bears S51°E 39.70 feet scribed T37N R28W MON 242 BT.

A fir 8 ins. bears S20°W 21.50 feet scribed T37N R28W MON 242 BT.

Bearing trees had 6 inch bands and there scribe painted red, along with the required signs attached, a USDA steel post was set South 19.57 feet from the corner.

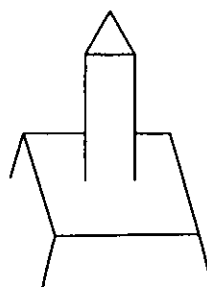
2. Found a 4 ft tall obelisk #242 United States and Canada; treaty of 1846; line established 1857-1861; surveyed and marked 1903-1907.

A 9 inch douglas fir S51°E 39.70 ft. with well healed face.

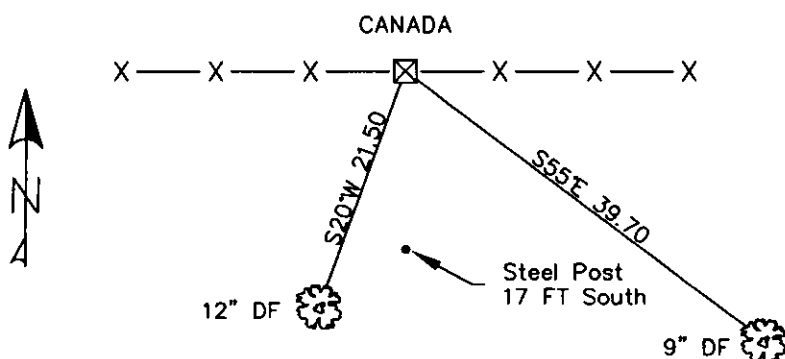
A 12 inch douglas fir S20°W 21.50 ft. with well healed face.

A steel post with LSM decal 17 ft. south.

3. Monument looks good and painted silver. Repainted rings and blazes, tags and signs in good shape.



MAGNETIC DECLINATION - 16° EAST



SKETCH OF CORNER

CERTIFICATION	
I, <u>CURT HECKROTH</u>	<i>Curt Heckroth</i>
certify the information herein is true and correct.	
Signature Ground Party Chief	
I, <u>LAWRENCE A. LAWRENCE A.</u>	
certify that this Corner Record correctly represents work performed by me or under my direction in compliance with the "Corner Recordation Act" (MCA, 7-22-107, et seq., M.C.A.)	
9748 LS	
Signature of Surveyor	
LAND SURVEYOR	
Date: <u>1-25-10</u>	9748 LS
Employer: <u>GLAHE & ASSOC.</u>	

Office of Clerk and Recorder, County of Lincoln. This "corner

record" was filed for record on 224115 BOOK: CCR CC&R'S PAGE: 11367 Pages: 1

was noted on the cross-index STATE OF MONTANA LINCOLN COUNTY RECORDED: 01/27/2010 12:37 KOI: CC&R'S

book No. TAMMY D. LAUER CLERK AND RECORDER

FEE: \$0.00

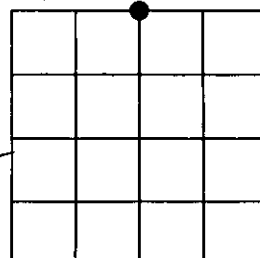
BY: *Tammy D. Lauer*

TO: FILED

Cross Index No. A-15 T. 37N R. 28W PMM

Adopted July 1, 1981, Montana Board of Professional Engineers & Land Surveyors

Sec. 3



● corner this sheet