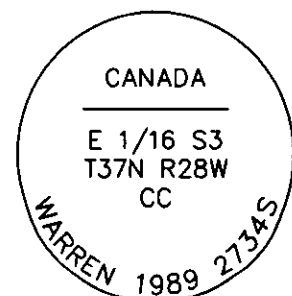


CERTIFIED CORNER RECORDATION

Corner E 1/16 Sec. 3 & Canada T. 37N R. 28W P.M.M. Lincoln County

1. 1989 Certified Corner Recordation by H. Gene Warren MT Reg. No. 2734S: No previous record or evidence. Monument and accessories set to perpetuate corner position.
Set a standard 3 1/4 inch Forest Service alum. cap on a 5/8 inch rod 26 inches into the ground;
from which;
A 7 inch fir bears S7°W 23.38 feet scribed E 1/16 S3 CC BT.
A 12 inch pine bears S66°W 42.66 feet scribed E 1/16 S3 CC BT.
Set a USDA steel post 23 feet south of corner.
2. Found a 3 1/4 inch USDA aluminum cap on 5/8 inch rod, 9 ins. out of ground. 2.5 north of international fence.
A 10 inch douglas fir S7°W 23.38 ft. to existing nail, with well healed face.
A dead 13 inch ponderosa pine S56°W (record S66°W) 42.66 ft. to existing nail, open face E 1/16 S3 CC BT visible.
A steel post with LSM and Boundary decals 23 ft. south.

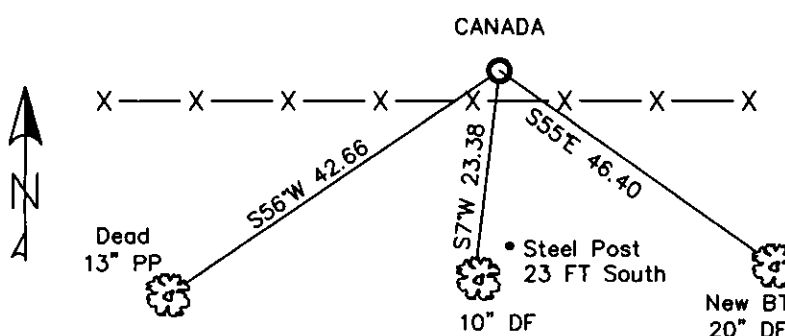


3. Stacked and painted a small mound of stones around monument.

Established one new bearing tree;

A 20 inch douglas fir S55°E 46.40 ft., to aluminum nail in side-center, scribed "E 1/16 S3 CC BT".
Repainted rings and blazes on existing BT's, signs and tags are good.

MAGNETIC DECLINATION - 16° EAST



SKETCH OF CORNER

CERTIFICATION
I, CURT HECKROTH *Curt Heckroth*
certify the information herein is true and correct.
Signature Ground Party Chief
I, LAWRENCE A. GLAHE *L. A. Glahe*
certify that this Corner Record properly represents work performed by me or under my direction in compliance with the "Corner Recordation Act, 170-22-101, et seq., M.C.A.)
Date: 1-26-10 9748 LS
Employer: GLAHE & ASSOCIATES, INC.

Office of Clerk and Recorder, County of Lincoln. This "corner

record" was filed for record

was noted on the cross-ind

book No. _____

224114 BOOK: CCR CC&R'S PAGE: 11366 Pages: 1

STATE OF MONTANA LINCOLN COUNTY

RECORDED: 01/27/2010 12:36 KOI: CC&R'S

TAMMY D. LAUER CLERK AND RECORDER

FEE: \$0.00

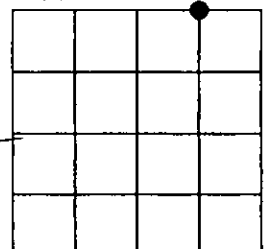
TO: FILED

BY: *Glenn A. K... Deputy*

Cross Index No. A-16 T. 37N R. 28W P.M.M.

Adopted July 1, 1981, Montana Board of Professional Engineers & Land Surveyors

Sec. 3



● corner this sheet