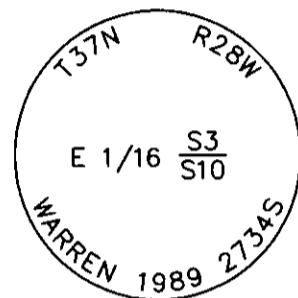


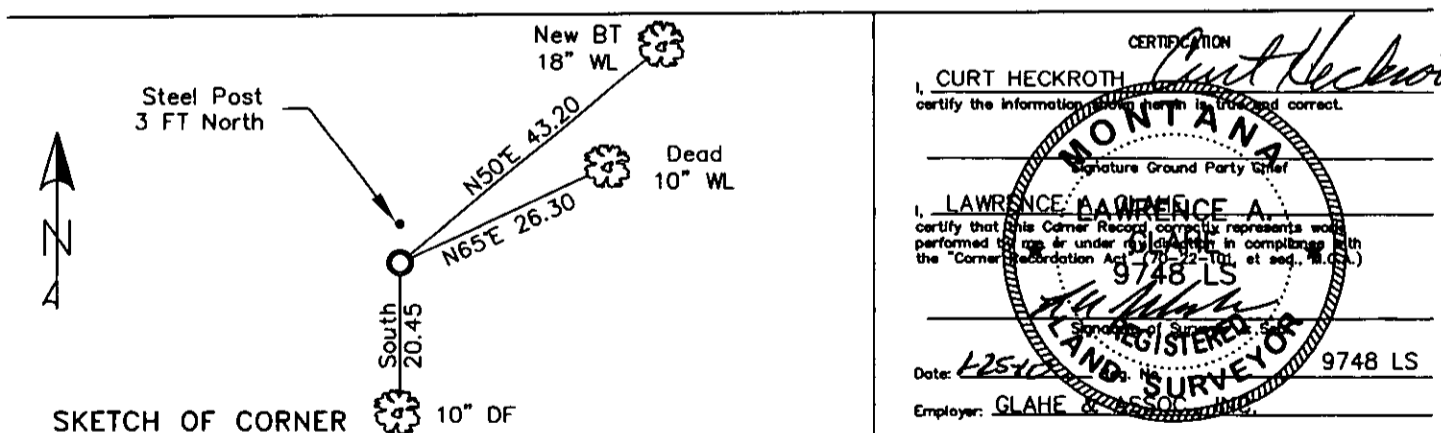
CERTIFIED CORNER RECORDATION

Corner E 1/16 Sec. 3 & 10 T. 37N R. 28W P.M.M. Lincoln County

1. 1989 Certified Corner Recordation by H. Gene Warren MT Reg. No. 2734S: No previous record or evidence. Monument and accessories set to perpetuate corner position.
Set a standard 3 1/4 inch Forest Service alum. cap on a 5/8 inch rod 26 inches into the ground;
from which;
A 10 inch larch bears N65°E 26.30 feet scribed E 1/16 S3 BT.
A 7 inch fir bears South 20.45 feet scribed E 1/16 S10 BT.
Set a USDA steel post 3 feet north of corner.
2. Found a 3 1/4 inch USDA aluminum cap 4 ins. out of ground.
A dead 10 inch western larch N65°E 26.30 ft. with open face E 1/16 S3 BT visible.
A 10 inch douglas fir south 20.45 ft. with well healed face.
A steel post with LSM and Boundary decals 3 ft. north.
3. Stacked and painted a small mound of stones around monument.
Established one new bearing tree;
An 18 inch western larch N50°E 43.20 ft. to aluminum nail in side-center scribed E 1/16 S3 BT.
Repainted rings and blazes on existing BTs, signs and tags are good.



MAGNETIC DECLINATION - 16° EAST



Office of Clerk and Recorder, County of Lincoln. This "corner

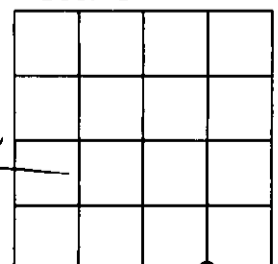
record" was filed for record on 224113 BOOK: CCR CC&R'S PAGE: 11365 Pages: 1
was noted on the cross-index pl STATE OF MONTANA LINCOLN COUNTY
book No. RECORDED: 01/27/2010 12:35 KOI: CC&R'S
TAMMY D. LAUER CLERK AND RECORDER

FEE: \$0.00
TO: FILED

Cross Index No. E-16 T. 37N R. 28W PMM

Adopted July 1, 1981, Montana Board of Professional Engineers & Land Surveyors

Sec. 3



● corner this sheet