

CERTIFIED CORNER RECORDATION

Corner NW Cor. Sec. 11 T. 37N R. 28W P.M.M. Lincoln County

1. 1884 original survey by F. Sizer and A. Jaqueth: Set a sandstone 14x10x8 ins. 10 ins. into the ground for corner to sections 2, 3, 10 and 11, marked with 5 notches on south side and 2 on the east edges,

from which:

- A tam. 24 ins. diam. bears N6°15'E 73 lks. marked T37N R28W S2 BT.
- A tam. 10 ins. diam. bears S51°45'E 62 lks. marked T37N R28W S11 BT.
- A tam. 10 ins. diam. bears S53°45'W 62 lks. marked T37N R28W S10 BT.
- A tam. 30 ins. diam. bears N34°W 56 lks. marked T37N R28W S3 BT.

1968 Remonumentation by BLM: Set an iron post 30 ins. long 2 1/2 ins. into the ground with brass cap,

from which the original BTs:

- A 24 inch snag bears N6 1/4°E 73 lks. mkd. T37N R28W S2 BT.
- A 20 inch stump bears S51°45'E 62 lks. mkd. BT.
- A 30 inch stump bears N34°W 56 lks. mkd. with a overgrown blaze.

New bearing trees:

- A 7 inch larch bears N61°E 26 lks. mkd. T37N R28W S2 BT.
- An 8 inch larch bears S31°E 89 lks. mkd. T37N R28W S11 BT.
- An 8 inch larch bears S19°W 23 lks. mkd. T37N R28W S10 BT.
- A 7 inch fir bears N11°W 49 lks. mkd. T37N R28W S3 BT.

1989 Certified Corner Recordation by H. Gene Warren MT Reg. No. 2734S: Found a 3 1/4 inch brass cap set in mound of stone,

from which:

- An 8 inch larch snag bears S29°E 59.10 ft. mkd. T37N R28W S11 BT.
- A 10 inch larch bears S20°W 15.36 ft. scribe overgrown.
- A 10 inch larch bears N61°E 17.00 ft. mkd. T37N R28W S2 BT.
- A 10 inch fir bears N11°W 32.23 ft. scribe overgrown.
- A 24 inch stump bears S54°W 61.50 ft. with letters W S10.
- A 33 inch stump bears N33°W 37.00 ft. with no scribing visible.
- A 24 inch blowdown bears N8°E 48.00 ft. mkd. T37N R28W S2 BT.

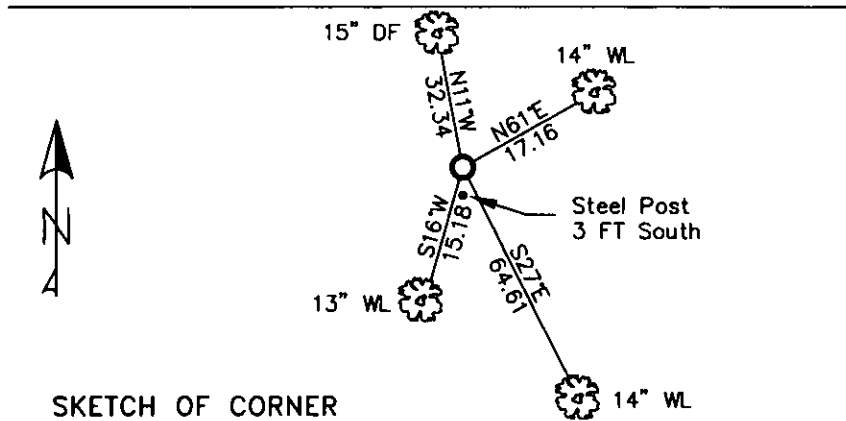
2. Found 3 1/4 inch BLM brass monument 6 ins. out of ground surrounded by small mound of stone.

- A 14 inch western larch N61°E 17.16 ft. with well healed face. (BLM 1968)
- A 14 inch western larch S27°E 64.61 ft. to existing nail with well healed face. (Warren 1989)
- A 13 inch western larch S16°W (record S19°W) 15.18 ft. with well healed face. (BLM 1968)
- A 15 inch douglas fir N11°W 32.34 ft. to existing nail with well healed face. (BLM 1968)

3. Restacked and repainted stones around monument.

Repainted rings and blazes on BTs, put new BT tag on Sec. 10 BT.

MAGNETIC DECLINATION - 16° EAST



SKETCH OF CORNER

CERTIFICATION  
I, CURT HECKROTH, certify the information is true and correct.  
Signature Ground Party Chief  
LAWRENCE A. GLAHE  
I, LAWRENCE A. GLAHE, certify that this Corner Recordation is my own work performed by me or under my direction in compliance with the "Corner Recordation Act" (70-22-101, et seq., M.C.A.)  
9748 LS  
Date: 12-5-10  
Employer: GLAHE & ASSOCIATES, INC.  
9748 LS

Office of Clerk and Recorder, County of Lincoln. This "corner

record" was filed for record on .

224112 BOOK: CCR CC&R'S PAGE: 11364 Pages: 1

Sec. 11

was noted on the cross-index p

STATE OF MONTANA LINCOLN COUNTY

book No. \_\_\_\_\_

TAMMY D. LAUER CLERK AND RECORDER

FEE: \$0.00

TO: FILED

Cross Index No. E-17 T. 37N R. 28W PMM

Adopted July 1, 1981, Montana Board of Professional Engineers & Land Surveyors


● corner this sheet