

# CERTIFIED CORNER RECORDATION

Corner C.C. of Sections 2 & 3 T. 37N R. 28W P.M.M. Lincoln County

1. 1894 Original Survey by F. Sizer and A. Jaqueth: Set a quartzite stone 14x10x6 ins., 10 ins. into the ground for closing corner for sections 2 and 3, marked C.C. with B.P. on north and 2 grooves on east and 4 grooves on west faces,

from which:

- A fir 14 ins. diam. bears S46 45W 37 lks. marked T37N R28W S3 BT.  
A tam. 8 ins. diam. bears S51E 21 lks. marked T37N R28W S2 BT.

1969 Remonumentation BLM: Set an iron post 30 inches long 2 1/2 inches diam., 24 inches into the ground,

from which:

- A larch 7 ins. diam. bears S54 1/2E 55 lks. marked T37N R28W S2 CC BT.  
A fir 6 ins. diam. bears S61W 54 lks. marked T37N R28W S3 CC BT.  
Buried the stone alongside the iron post.

1989 Certified Corner Recordation by H. Gene Warren MT Reg. No. 2734S: Found 2 1/2 inch brass cap on 2 inch pipe 4 inches out of ground,

from which:

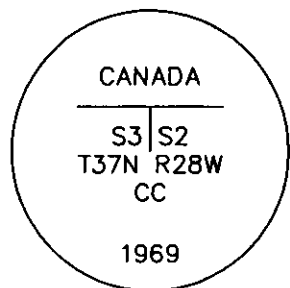
- A 10 inch stump bears S57E 37.00 feet no scribing visible, painted red.  
A 13 inch fir bears S54E 31.30 feet scribe overgrown.  
A 34 inch stump bears S50W 24.75 feet no scribing visible painted red.  
An 11 inch stump bears S62W 35.28 feet no scribing visible, painted red.  
Maintained BT's with required signs and paint.

New BTs:

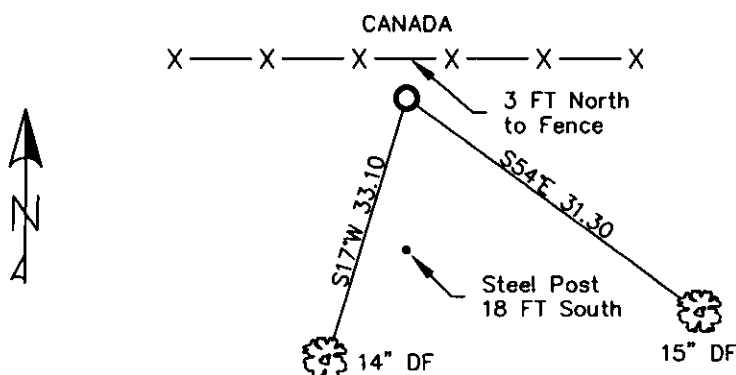
- An 11 inch fir bears S17W 33.10 feet scribed T37N R28W S3 CC BT.  
Set a 6 foot steel post south 18 feet.

2. Found a 3 1/4 inch BLM brass cap 4 ins. out of ground surrounded by small scattered mound of stone.  
A 15 inch douglas fir S54E 31.30 ft with well healed face and existing nail in side-center.  
A 14 inch douglas fir S17W 33.10 ft with well healed face and existing nail in side-center.  
A steel post 18 ft. south with LSM decal.

3. Restacked and repainted stones around monument. Repainted rings and blazes on BT's, signs and tags are in good shape.



MAGNETIC DECLINATION - 16° EAST



CERTIFICATION

I, CURT HECKROTH *Curt Heckroth*  
certify the information above is true and correct.

Signature Ground Party Chief

I, LAWRENCE A. GLAHE  
certify that this Corner Record correctly represents work performed by me or under my direction in compliance with the "Corner Recordation Act" (70-22-101, et seq., M.C.A.)

9748 LS

Date: 12-5-10 Recd: 9748 LS

Employer: GLAHE & ASSOCIATES

Office of Clerk and Recorder, County of Lincoln. This "corner

record" was filed for record: 224111 BOOK: CCR CC&R'S PAGE: 11363 Pages: 1

was noted on the cross-index: STATE OF MONTANA LINCOLN COUNTY

RECORDED: 01/27/2010 12:33 KOI: CC&R'S

TAMMY D. LAUER CLERK AND RECORDER

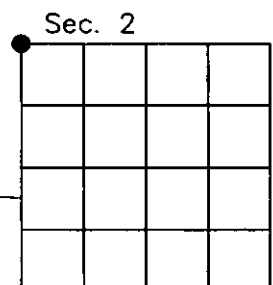
book No.                      FEE: \$0.00

TO: FILED

BY: *Lawrence Glahe*

Cross Index No. A-17 T. 37N R. 28W PMM

Adopted July 1, 1981, Montana Board of Professional Engineers & Land Surveyors



● corner this sheet