

# CERTIFIED CORNER RECORDATION

Corner West 1/16 Sec. 2 & 11 T. 37N R. 28W P.M.M. Lincoln County

## 1. 1989 Certified Corner Recordation by H. Gene Warren MT Reg. No. 2734S:

Set a standard 3 1/4 inch Forest Service alum. cap on 5/8 inch rod 28 inches into the ground;

from which:

A 6 inch fir bears N10°W 23.50 ft. scribed W 1/16 S2 BT.

A 14 inch fir bears S 19°W 52.15 ft. scribed W 1/16 S11 BT.

Set a USDA steel post 3 ft. north of corner.

## 2. Found 3 1/4 inch USDA aluminum monument flush with ground. Lies under north-south fenceline.

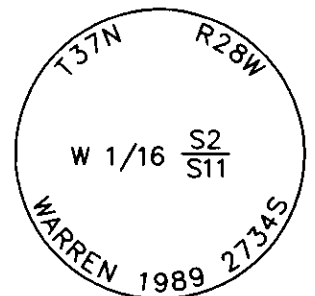
A 22 inch douglas fir S19°W 52.15 ft. with well healed face.

An 11 inch douglas fir N10°W 23.50 ft. with well healed face.

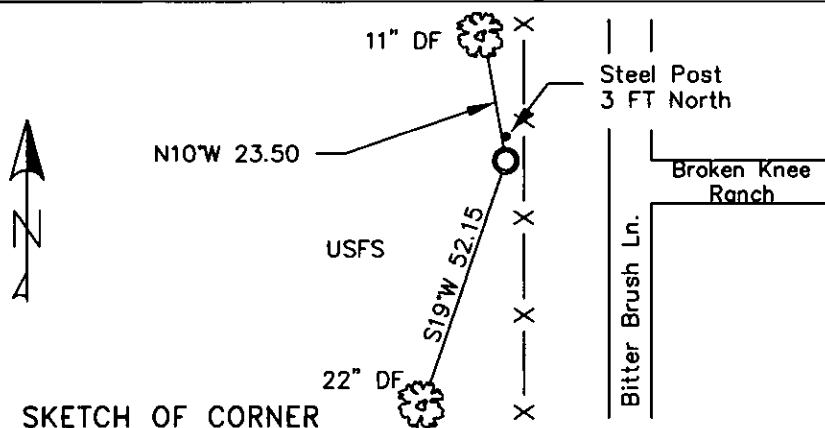
A steel post with LSM and Boundary Decals 3 ft. north of corner.

## 3. Stacked and painted small mound of stone around monument.

Put aluminum nails at record distances in BTs and repainted rings and blazes and put up new BT tags.



MAGNETIC DECLINATION- 16° EAST



CERTIFICATION  
I, CURT HECKROTH *Curt Heckroth*  
certify the information shown herein is true and correct.

I, LAWRENCE A. GLAHE  
certify that this Corner Recordation represents work performed by me or under my direction in compliance with the "Corner Recordation Act" (MCA 82-101, et seq., M.C.A.)

9748 LS  
Date: 1-25-10  
Employer: GLAHE & ASSOCIATES, INC.

Office of Clerk and Recorder, County of Lincoln. This "corner

record" was filed for record ( 224109 BOOK: CCR CC&R'S PAGE: 11361 Pages: 1

was noted on the cross-index STATE OF MONTANA LINCOLN COUNTY

book No. TAMMY D. LAUER CLERK AND RECORDER

FEE: \$0.00

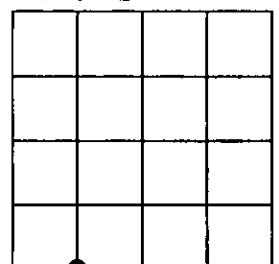
BY: *Tammy D. Lauer*

TO: FILED

Cross Index No. E-18 T. 37N R. 28W PMM

Adopted July 1, 1981, Montana Board of Professional Engineers & Land Surveyors

Sec. 2



● corner this sheet