

CERTIFIED CORNER RECORDATION

Corner E 1/16 Sec. 11 & 2 T. 37N R. 28W P.M.M. Lincoln County

1. 1989 Certified Corner Recordation by MT Reg. No. 2734S: Set a standard 3 1/4 inch Forest Service alum. cap on a 5/8 inch rod 28 inches into the ground;

from which:

A 7 inch fir bears S27 1/2°E, 17.05 feet, scribed E 1/16 S11 BT.

An 8 inch fir bears N26°E, 20.30 feet, scribed E 1/16 S2 BT.

Set a USDA steel post 3 feet north of corner.

2. Found a 3 1/4 inch USDA aluminum cap 6 ins. out of ground, surrounded by small mound of stone.

Steel post with LSM and Boundary Signs 3 ft. north.

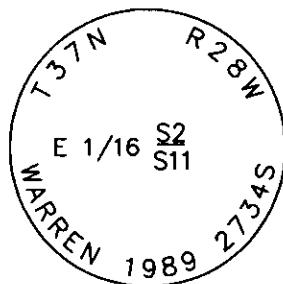
A 10 inch douglas fir N32°E, 20.30 ft. with a well healed face (record N26°E).

A 10 inch douglas fir S23°E, 17.05 ft., with a partially healed face, illegible scribing visible (record S27 1/2°E).

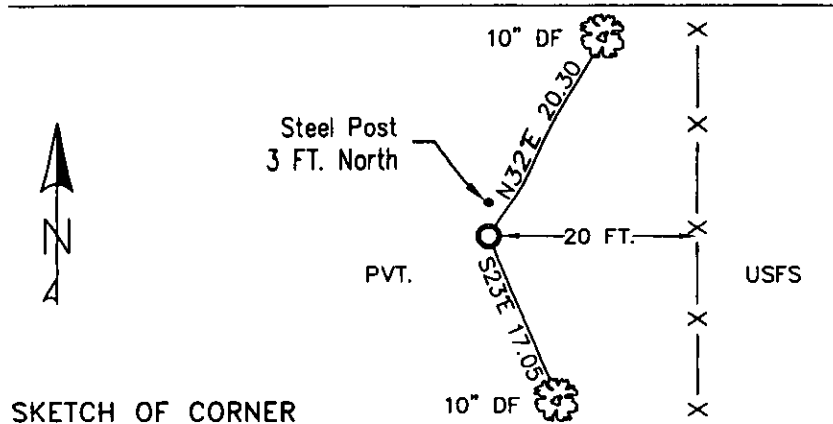
3. Restacked and painted stones around monument.

Put aluminum nails at record distances and repainted blazes and rings on BT's.

Attached new BT tags.



MAGNETIC DECLINATION - 16° EAST



SKETCH OF CORNER

CERTIFICATION
I, CURT HECKROTH *Curt Heckroth*
certify the information above is true and correct.

Signature Ground Party/Chk
I, LAWRENCE A. GLAHE
certify that this Corner Recordation was correctly represented, performed by me or under my direction in compliance with the "Corner Recordation Act" (M.S.A. 82-101, et seq., M.C.A.)

9748 LS
LAND SURVEYOR
Date: 1-25-10
Employer: GLAHE & ASSOCIATES, INC.

Office of Clerk and Recorder, County of Lincoln. This "corner

record" was filed for record

was noted on the cross-index

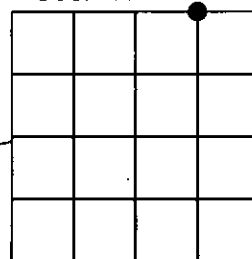
book No. _____

224108 BOOK: CCR CC&R'S PAGE: 11360 Pages: 1
STATE OF MONTANA LINCOLN COUNTY
RECORDED: 01/27/2010 12:30 KOI: CC&R'S
TAMMY D. LAUER CLERK AND RECORDER
FEE: \$0.00 BY: *Tammy D. Lauer*
TO: FILED

Cross Index No. E-20 T. 37N R. 28W PMM

Adopted July 1, 1981, Montana Board of Professional Engineers & Land Surveyors

Sec. 11



● corner this sheet