

# CERTIFIED CORNER RECORDATION

Corner NE Cor. SEC. 2 T. 37N R. 28W P.M.M. Lincoln County

## 1. Original GLO Survey by F. Sizer and A. Jaqueth 1894

Set:

A quartzite stone, 24x10x8 ins., 18 ins. into the ground for closing corner to Sections 1 & 2, mkd. with 1 groove on East and 5 grooves on West faces, and with C C on South and B P on North faces.

From which:

A tamarack, 12 ins. dia. bears S44½°E, 114 lks. dist., mkd. "T37N R28W S1".

A Fir, 8 ins. dia. bears S41½°W, 53 lks. dist., mkd. "T37N R28W S2".

## Remonumentation by C.O.E. 1968

Information unknown

## 1989 Corner Recordation by Gene Warren MT. Reg. No. 2734S

Found:

A 2½ ins. brass cap on a 2 ins. pipe, 10 ins. above ground with original stone set alongside (mkd. per record)

From which:

A 24 ins. Fir bears S43°W, 34.61 feet dist., scribe unreadable.

A 10 ins. larch bears S45°E, 83.20 feet dist., scribe overgrown.

Maintained found BT's with required signs and paint, set a USDA steel post 20.27 ft. South.

## 2. Found:

A 2½ ins. Brass Monument, 10 ins. out of ground with a stone on northwest side.

A 15 ins. western larch bears S75°E (record S45°E), BT tag reads N75°W, 83.20 feet dist. to aluminum nail, well healed face.

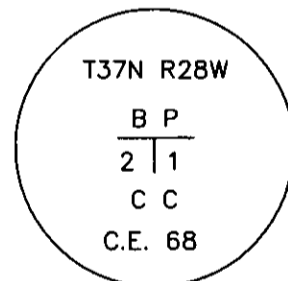
A 29 ins. douglas fir bears S43°W, 34.61 feet dist. to alum. nail, open face, chop marks visible, no scribing.

A steel post with LSM decal bears South, 20.27 feet dist.

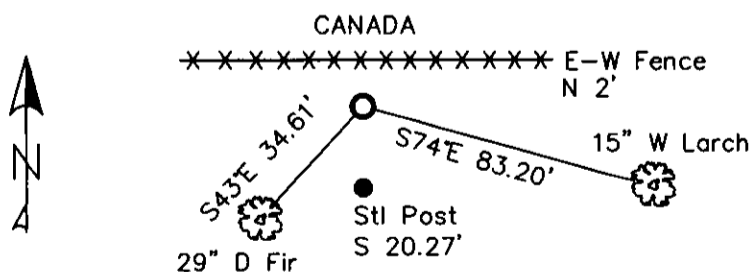
East-West fenceline US/Canada Boundary bears North, 2.0 feet dist.

## 3. Stacked and painted a small mound of stone around monument.

Repainted rings and blazes on existing BT's.



MAGNETIC DECLINATION - 16° EAST



## SKETCH OF CORNER

CERTIFICATION

I, CURT HECKROTH *Curt Heckroth*  
 certify the information shown herein is true and correct.

I, LAWRENCE A. GLAHE  
 certify that the Corner Recordation represents work performed by me or under my direction in compliance with the "Corner Recordation Act" (MCA 22-101, et seq., M.C.A.)

Date: 1-25-10 9748 LS  
 Employer: GLAHE & ASSOCIATES, INC.

Office of Clerk and Recorder, County of Lincoln. This "corner

record" was filed for record 224106 BOOK: CCR CC&R'S PAGE: 11358 Pages: 1

was noted on the cross-index STATE OF MONTANA LINCOLN COUNTY

book No.                      RECORDED: 01/27/2010 12:28 KOI: CC&R'S

TAMMY D. LAUER CLERK AND RECORDER

FEE: \$0.00

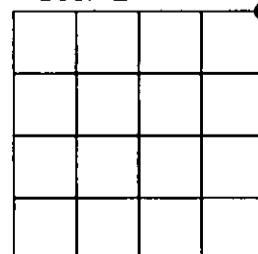
BY: *Jeannie Lauer*

TO: FILED

Cross Index No. A-21 T. 37N R. 28W PMM

Adopted July 1, 1981, Montana Board of Professional Engineers & Land Surveyors

Sec. 2



● corner this sheet