

# CERTIFIED CORNER RECORDATION

Corner COE 5700-2, Sec 1 T. 37N R. 28W P.M.M. Lincoln County

1. NONE

2. Found:

A 3½ ins. Brass Cap in 4 ins. concrete stamped as shown.

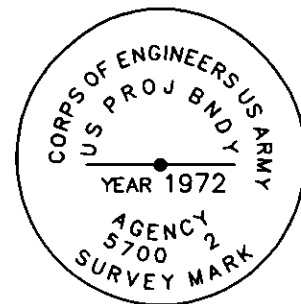
3. Established:

An 8 ins. Douglas Fir N16°E, 31.40 ft. dist., scribed " 5700/2 BT ".

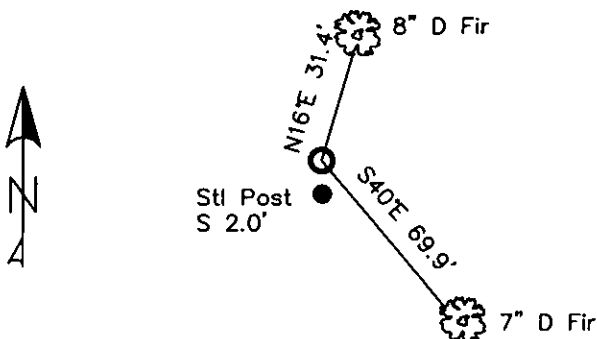
A 7 ins. Ponderosa Pine bears S40°E, 69.90 ft., scribed " 5700/2 BT ".

A Steel post with LSM and PB decals 2 ft. on line.

Painted red bands around the bearing trees and attached Land Survey Monuments and bearing tree signs.



MAGNETIC DECLINATION - 16° EAST



## CERTIFICATION

I, ERICH SCHRACK

certify the information shown herein is true and correct.

I, LAWRENCE A. GLAHE

certify that the Corner Recordation was performed by me or under my direction in compliance with the "Corner Recordation Act" (20-22-101, et seq., M.C.A.)

Date: 12-5-10

Employer: GLAHE & ASSOCIATES, INC.

9748 LS

9748 LS

9748 LS

9748 LS

9748 LS

9748 LS

9748 LS

9748 LS

9748 LS

9748 LS

9748 LS

9748 LS

9748 LS

9748 LS

9748 LS

9748 LS

9748 LS

9748 LS

9748 LS

9748 LS

9748 LS

9748 LS

9748 LS

9748 LS

9748 LS

## SKETCH OF CORNER

Office of Clerk and Recorder, County of Lincoln. This "corner

record" was filed for record on 224104 BOOK: CCR CC&R'S PAGE: 11356 Pages: 1

was noted on the cross-index STATE OF MONTANA LINCOLN COUNTY

book No. TAMMY D. LAUER CLERK AND RECORDER

FEE: \$0.00

BY: L. A. Glahé

TO: FILED

Cross Index No. A-C/21-22 T. 37N R. 28W P.M.M.

Adopted July 1, 1981, Montana Board of Professional Engineers & Land Surveyors

Sec. 21

●			

● corner this sheet