

CERTIFIED CORNER RECORDATION

Corner	N.W. Corner of C.O.E. Tr. No. 3519	Sec.	37	T.	28N	R.	28W	P.M., MT	Lincoln	County
--------	---------------------------------------	------	----	----	-----	----	-----	-------------	---------	--------

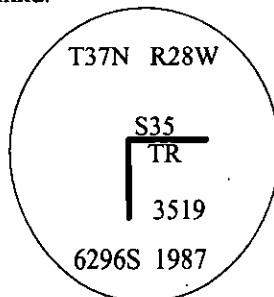
I. Plat No. 1764 by Kenneth Haskell, dated June 1971 and on file with the Lincoln County Clerk and Recorder: "I.P."

1987 Certified Corner Recordation, page No. 3630, Certificate of Survey No. 1616, by Linda S. Smith, 6296S: Found a 3/4 in. diam. iron pipe, 6 ins. above the ground:

NARRATIVE:

The Warranty Deed filed in Book 9, Pages 179 and 180, Records of Lincoln County, (Which created and conveyed Tract No. 3519 to the Department of the Army), indicates that this corner is located on the Center E-W 1/16 line of the Northeast 1/4 of Section 35. The position of this corner, as established by Kenneth Haskell, is shown as being S0°01'E, 1320.0 feet and N89°55'W, 60.0 feet from the corner of Sections 25, 26, 35 and 36. To be consistent with the original deed I therefore establish this corner on the 1/16 line and 60.00 feet westerly from the position for the North 1/16 Corner of Sections 35 and 36.

The unaccepted Haskell monument bears S34°36'W, 20.67 ft., from the established position of this corner. *See Certificate of Survey by 6296S in 1987 for additional information. Set a 3/4" x 30" aluminum rod monument, 12" above ground, with a 3 1/4" diam. Forest Service aluminum cap mkd.



From which I establish the following bearing trees:

A 9" diam. Douglas Fir, bears N65°E, 50.8 ft. dist., scribed "TR 3519 BT".

A 7" diam. Ponderosa Pine, bears N30°W, 63.2 ft. dist., scribed "TR 3519 BT".

Build a 3 ft. dia.m rock supporting collar mound around monument and painted red bands around the bearing trees and attached "Land Survey Monument" and Bearing Tree" signs.

Set a guard post, with a "Survey Marker" decal attached, 2.0 ft. West from corner.

II. Found a 3/4 in. diam. aluminum rod, protruding 5 ins. above the ground, firmly set, in a mound of sotne, with a 3 1/4 in. diam. aluminum cap, mkd. as shown.

from which:

A fir, 17 ins. diam., bears N65°E, 50.8 ft. dist., with visible scribe.

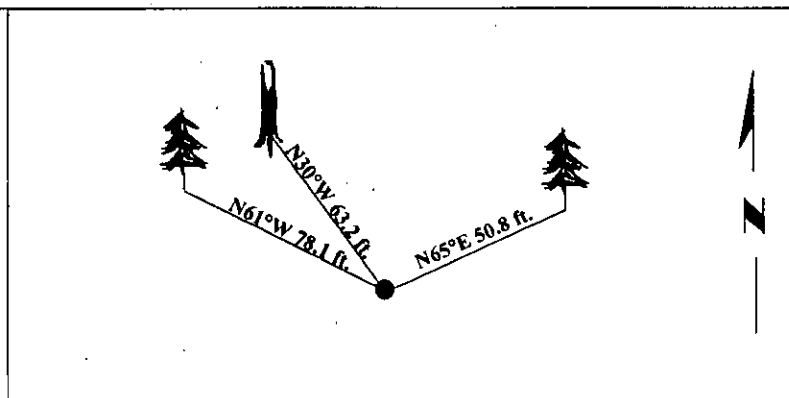
A pine snag, 10 ins. diam., bears N30°W, 63.2 ft. dist., with a healed face.

III. Established one new bearing tree:

A fir, 8 ins. diam., bears N61°W, 78.1 ft. dist., mkd. "X" on snowblaze "BT".

Painted a red band around the bearing tree and attached Land Survey Monument and Bearing Tree signs.

Magnetic Declination: 20° East.



SKETCH OF CORNER

CERTIFICATION

I. **Rex O. Rice**

certify the information shown herein is true and correct.

Rex O. Rice

I. **Steven A. Boyer**

certify that this Corner Record correctly represents work performed by me under my direction in compliance with the "Corner Recordation Act" (70-22-101, et seq., M.C.A.)

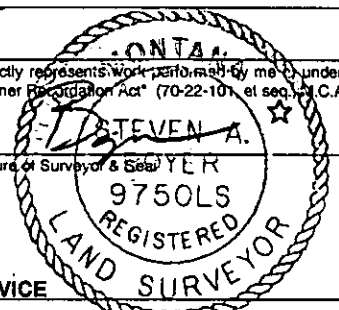
Steven A. Boyer

Signature of Surveyor & Seal

Date: **6/10/98**

Reg. No.: **9750LS**

Employer: **U.S. FOREST SERVICE**

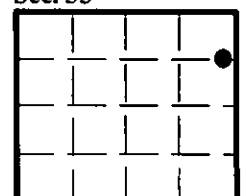


Sec. 35

Office of Clerk and Recorder, County of Lincoln. This "corner record" was filed for record on Mar 3, 1999 was noted on the cross-index plat and is assigned page No. 10311 in book No.

Coral M. Cummins B. D.B.

County Official



• - corner this sheet

Cross Index No. **W-20.9** T. **37N** R. **28W** P.M., MT

Adopted July 1, 1981, Montana Board of Professional Engineers & Land Surveyors