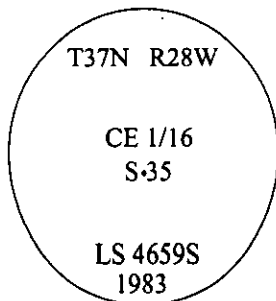


CERTIFIED CORNER RECORDATION

Corner CE 1/16 Sec. 35 T. 37N R. 28W P.M., MT Lincoln County

- I. 1983 Certified Corner Recordation by Carl R. McMillen, LS 4659S: This corner was not previously set. Set a driveable Aluminum Monumument with rock cairn, (5/8" x 24" Alum. Mon. w/ 3" cap).



Scribed 2 trees:

- A 6" Pine, bears N44°E, 60.88 ft., marked "CE 1/16 S35 BT".
A 8" Pine, bears S64°E, 39.90 ft., marked "CE 1/16 S35 BT".

- II. Found a 5/8 in. diam. aluminum rod, protruding 10 ins. above the ground, firmly set, with a 3 in. diam. aluminum cap, mkd. as shown.

from which:

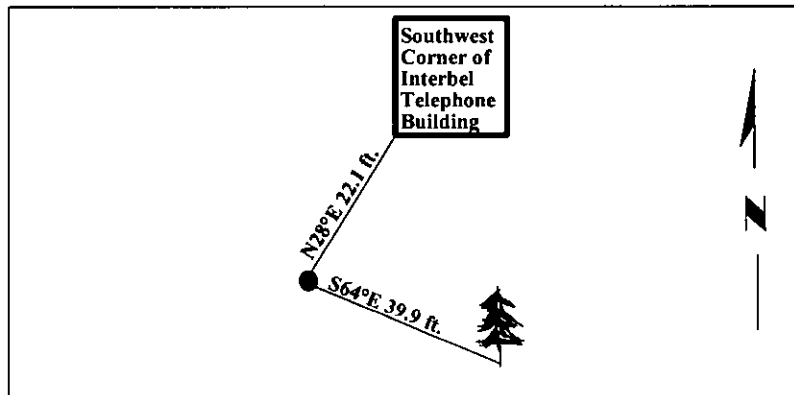
- A pine, 11 ins. diam., bears S64°E, 39.9 ft. dist., with a healed face.
N.E. bearing tree is uprooted and moved.

- III. Reference Monument:

Southwest corner of cement Interbel Telephone building, bears N28°E, 22.1 ft. distance.

Painted a red band around the bearing tree and attached Land Survey Monument and Bearing Tree signs.

Magnetic Declination: 20° East.



SKETCH OF CORNER

CERTIFICATION

I. Rex O. Rice

certify the information shown herein is true and correct.

Rex O. Rice

I. Steven A. Boyer

certify that this Corner Record correctly represents work performed by me or under my direction in compliance with the "Corner Recordation Act" (70-22-101 et seq., M.C.A.)

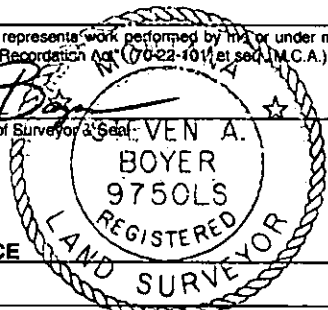
Steven A. Boyer

Signature of Surveyor & Seal

Date: 6/10/98

Reg. No.: 9750LS

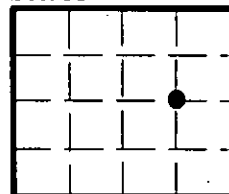
Employer: U.S. FOREST SERVICE



Sec. 35

Office of Clerk and Recorder, County of Lincoln. This "corner record" was filed for record on Mar 3, 1999 was noted on the cross-index plat and is assigned page No. 10302 in book No. _____

Carol M. Cumming By DUB
County Official



• - corner this sheet

Cross Index No. X-20

T. 37N R. 28W P.M., MT