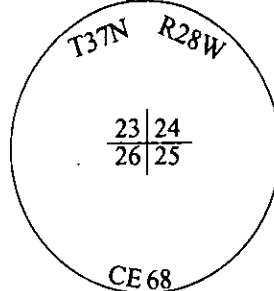


CERTIFIED CORNER RECORDATION

Corner Sec. Cor. Secs. 23,24,25&26 T. 37N R. 28W P.M., MT Lincoln County

I. 1894 G.L.O. Original Record by Frank L. Sizer et. al: Set a post, 4 ft. long, 4 ins. square, 24 ins. in the ground for cor to secs. 23,24,25 and 26, mkd. "T37N S24" on N.E., "R28W S25" on S.E., "S26" on S.W. and "S23" on N.W. faces, with 2 notches on the S. and 1 notch on the E. edges. Established four bearing trees.

1968 Corp of Engineers Record: Set a brass cap, mkd. as shown, and found three bearing trees.



1983 Certified Corner Recordation by Carl R. McMillen, LS 4659S: Found C.O.E. brass cap on iron pipe.

Found 19" Fir, bears N42°30'E, 34.3 ft., scribing visible.

Found 25" Pine, bears S75°E, 25.1 ft., scribing visible (G.L.O. calls pine a fir).

Found 11" Pine, bears N79°30'W, 27 ft., mkd. "FS/RM".

Set new Bearing Tree, 12 " Tamarack, bears S42°W., 36.7 ft., mkd. "T37N R28W S26 BT".

II. Found a 2 in. diam. iron pipe, protruding 6 ins. above the ground, firmly set, with a 2 1/2 in. diam. brass cap, mkd. as shown.

from which:

A fir snag, 19 ins. diam., bears N42°E, 34.3 ft. dist., with visible scribe. (GLO-record)

A pine, 28 ins. diam., bears S75°E, 25.1 ft. dist., with a healed face. (GLO-record)

A larch, 14 ins. diam., bears S42°W, 36.7 ft. dist., with a healed face. (1983-record)

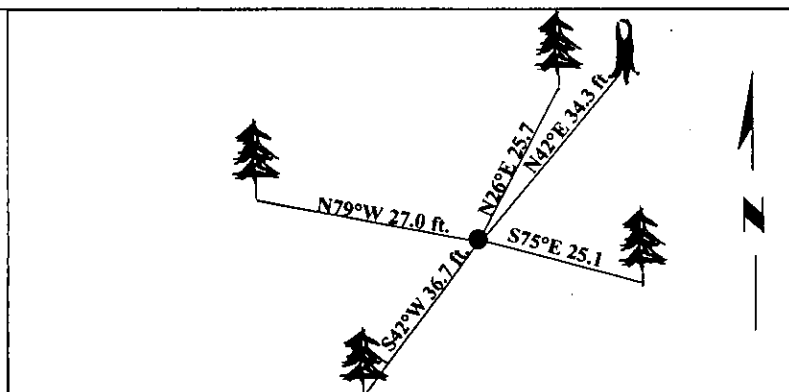
A pine, 17 ins. diam., bears N79°W, 27.0 ft. dist., with a healed face. (Unknown Origin)

III. Established one new bearing tree:

A fir, 7 ins. diam., bearing N26°E, 25.7 ft. dist., mkd. "T37N R28W S24 BT".

Painted red bands around the bearing tree and attached Land Survey Monument and Bearing Tree signs.

Magnetic Declination: 20° East.

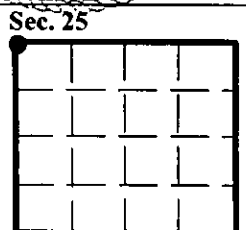


SKETCH OF CORNER

CERTIFICATION	
I. <u>Rex O. Rice</u>	certify the information shown herein is true and correct.
<u>Rex O. Rice</u>	
I. <u>Steven A. Boyer</u>	certify that this Corner Record correctly represents work performed by me or under my direction in compliance with the "Corner Recordation Act" (70-22-101, et seq., M.C.A.)
<u>Steven A. Boyer</u>	
Date: <u>6/10/98</u>	Signature of Surveyor & Seal
Reg. No.: <u>9750LS</u>	
Employer: <u>U.S. FOREST SERVICE</u>	

Office of Clerk and Recorder, County of Lincoln. This "corner record" was filed for record on Mar 3, 1998 was noted on the cross-index plat and is assigned page No. 10301 in book No. _____

Carol M. Cummings By DEB
County Official



• - corner this sheet