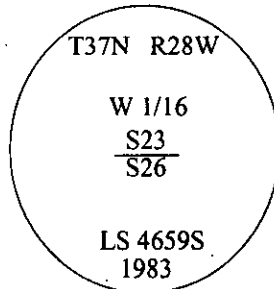


CERTIFIED CORNER RECORDATION

Corner W 1/16 Secs. 23 & 26 T. 37N R. 28W P.M., MT Lincoln County

- I. 1983 Certified Corner Recordation by Carl R. McMillen, LS 4659S: This corner was not previously set. Set driveable aluminum monument in rock cairn, (5/8" x 24" Alum. Mon. w/3" cap).



Scribed 2 B.T.'s:

- A 9" Tamarack, bears N85°E, 11.40 ft., mkd. "W1/16 S23 BT".
A 5" Red Fir, bears S44°W, 25.30 ft., mkd. "W1/16 S26 BT".

- II. Found a 3/4 in. diam. aluminum rod, protruding 6 ins. above the ground, firmly set, with a 3 1/4 in. diam. aluminum cap, mkd. as shown. Monument set in a mound of stone.

from which:

- A fir, 7 ins. diam., bears S44°W, 25.3 ft. dist., with a healed face.
Larch at N85°E has been removed for field.

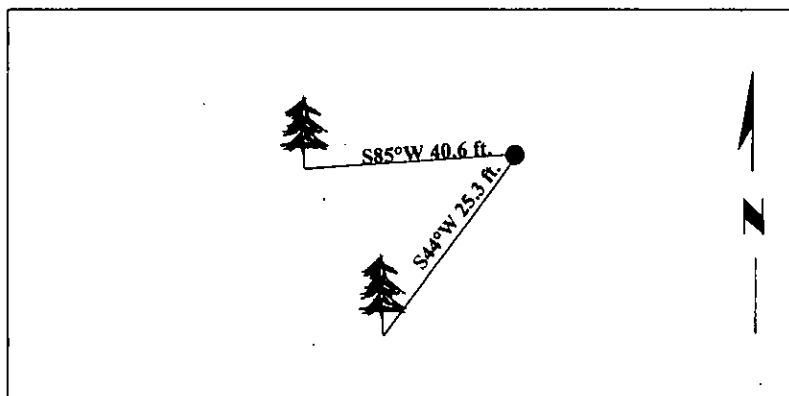
- III. Established one new bearing tree:

- A fir, 8 ins. diam., bearing S85°W, 40.6 ft. dist., mkd. "W1/16 S26 BT".
No trees available in sec. 23.

*Reference: Monument falls near a fence corner, fence runs West and South.

Painted red bands around the bearing tree and attached Land Survey Monument and Bearing Tree signs.

Magnetic Declination: 20° East.

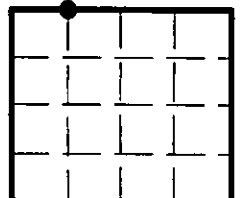


SKETCH OF CORNER

CERTIFICATION	
I. <u>Rex O. Rice</u>	certify the information shown herein is true and correct.
<u>Rex O. Rice</u>	
II. <u>Steven A. Boyer</u>	certify that this Corner Record correctly represents work performed by me or under my direction in compliance with the "Corner Recordation Act" (70-22-101, et seq., M.C.A.)
<u>Steven A. Boyer</u>	
Date: <u>6/09/98</u>	Signature of Surveyor & Seal
Reg. No.: <u>9750LS</u>	
Employer: <u>U.S. FOREST SERVICE</u>	

Office of Clerk and Recorder, County of Lincoln. This "corner record" was filed for record on Mar 3, 1999 was noted on the cross-index plat and is assigned page No. 10300 in book No. _____

Coral M. Cummings
County Official



• - corner this sheet