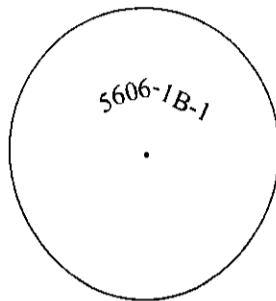


CERTIFIED CORNER RECORDATION

Corner C.O.E. Sec. 20 T. 37N R. 27W P.M., MT Lincoln County
5606/1B-1

- I. 1970 Corp. of Engineers Libby Dam Lake Koocanusa Cadastral District file No. E 53-1-154; For corner no. 1 of tract 5605-1B, set a standard U.S.C.E. disk, mkd. as shown:



- II. Found a 3 1/2 in. diam., Corps of Engineers brass cap, firmly set, protruding 1 in. above the ground, mkd. as shown above. No bearing trees found. Found a 1/2 in. diam. rebar, protrudes 5 ins. above the ground, West, 4.9 ft. dist. from the corner.

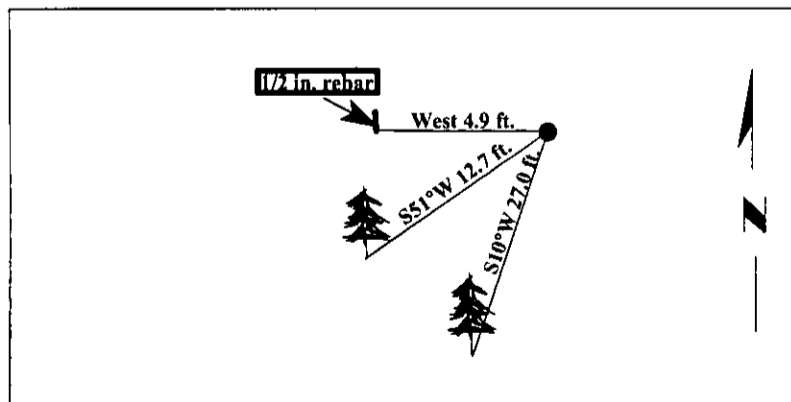
- III. Established two bearing trees:

A fir, 11 ins. diam., bears S10°W, 27.0 ft. dist., mkd. "COE 5606/1B-1 BT".

A fir, 12 ins. diam., bears S51°W, 12.7 ft. dist., mkd. "X" on snowblaze "BT".

Painted bearing trees and attached Land Survey Monument and Bearing Tree signs.
Corner falls near Murray Springs Well Site.

Magnetic Declination: 20° East.



SKETCH OF CORNER

I. Rex O. Rice

certify the information shown herein is true and correct.

I. Ronald A. Pearson

certify that this Corner Record correctly represents work performed by me or under my direction in compliance with the "Corner Recordation Act" (70-22-101, et seq., M.C.A.)

Date: 05/13/97

Reg. No.: 9008LS

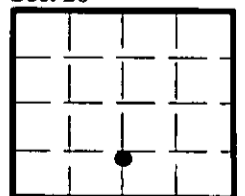
Employer: U.S. FOREST SERVICE



Office of Clerk and Recorder, County of LINCOLN. This "corner record" was filed for record on JULY 31, 1997 was noted on the cross-index plat and is assigned page No. 9895 in book No. CORAL M. CUMMINGS

County Official By RLB

Sec. 20



• - corner this sheet

Cross Index No. C.O.E. T. 37N R. 27W P.M., MT
5606/1B-1