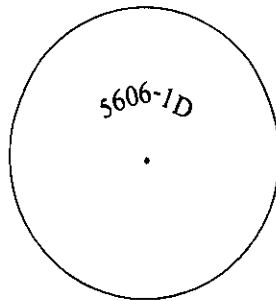


CERTIFIED CORNER RECORDATION

Corner C.O.E. Sec. 20 T. 37N R. 27W P.M., MT Lincoln County
5606/1D

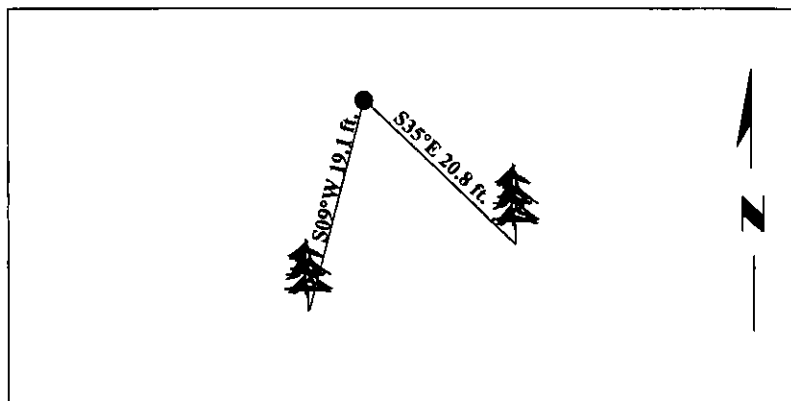
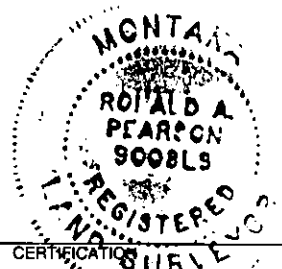
- I. 1970 Corp. of Engineers Libby Dam Lake Koocanusa Cadastral District file No. E 53-1-154: For corner no. 1D of tract 5606, set a standard U.S.C.E. disk, mkd. as shown:



- II. Found a 3 1/2 in. diam., Corps of Engineers brass cap, firmly set, protruding 2 ins. above the ground, mkd. as shown above. No bearing trees found.
- III. Established two bearing trees:
- A fir, 6 ins. diam., bears S09°W, 19.1 ft. dist., mkd. "COE 5606/1D BT".
A fir, 12 ins. diam., bears S35°E, 20.8 ft. dist., mkd. "COE 5606/1D BT".

Painted bearing trees and attached Land Survey Monument and Bearing Tree signs.
Corner falls near Murray Springs Well Site.

Magnetic Declination: 20° East.



SKETCH OF CORNER

I, Rex O. Rice
certify the information shown herein is true and correct.

I, Ronald A. Pearson
certify that this Corner Record correctly represents work performed by me or under my direction in compliance with the "Corner Recordation Act" (70-22-101, et seq., M.C.A.)

Ronald A. Pearson
Signature of Surveyor & Seal

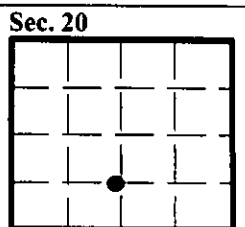
Date: 05/13/97

Reg. No.: 9008LS

Employer: U.S. FOREST SERVICE

Office of Clerk and Recorder, County of LINCOLN. This "corner record" was filed for record on JULY 31, 1997 was noted on the cross-index plat and is assigned page No. 9893, in book No. _____

CORAL M. CUMMINGS
County Official



• - corner this sheet

Cross Index No. C.O.E. T. 37N R. 27W P.M., MT
5606/1D