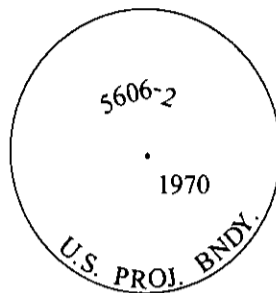


CERTIFIED CORNER RECORDATION

Corner C.O.E. Sec. 20 T. 37N R. 27W P.M., MT Lincoln County
5606/2

- I. 1970 Corp. of Engineers Libby Dam Lake Koocanusa Cadastral District file No. E 53-1-154: For corner no. 2 of tract 5606, set a standard U.S.C.E. disk, mkd. as shown:



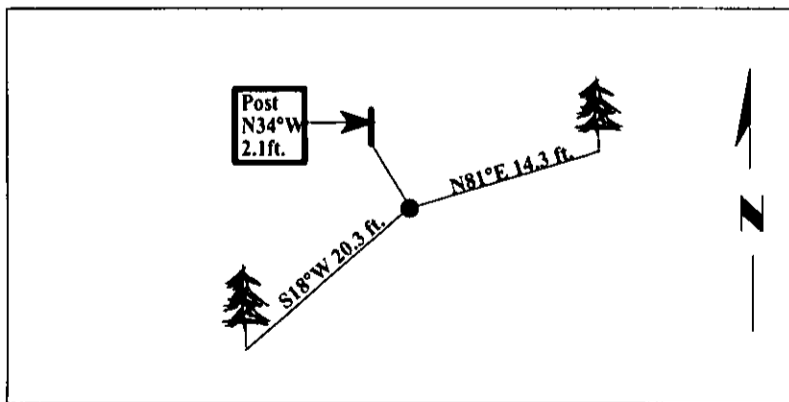
- II. Found a 3 1/2 in. diam., Corps of Engineers brass cap, set flush with the ground, in concrete, mkd. as shown above. No bearing trees found.

- III. Established two bearing trees and one steel fence post:

A pine, 15 ins. diam., bears S18°W, 20.3 ft. dist., mkd. "COE 5606/2".
A pine, 8 ins. diam., bears N81°E, 14.3 ft. dist., mkd. "X" on snowblaze "BT".
A 3 ft. tall, steel fence post, bears N34°E, 2.1 ft. dist. from the corner.

Painted bearing trees and attached Land Survey Monument and Bearing Tree signs.

Magnetic Declination: 20° East.



SKETCH OF CORNER

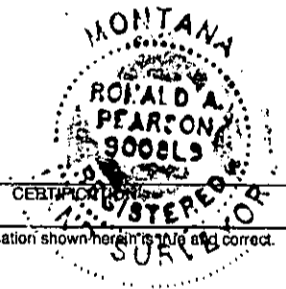
I. Rex O. Rice
certify the information shown herein is true and correct.

I. Ronald A. Pearson
certify that this Corner Record correctly represents work performed by me or under my direction in compliance with the "Corner Recordation Act" (70-22-101, et seq., M.C.A.)

Date: 04/17/97

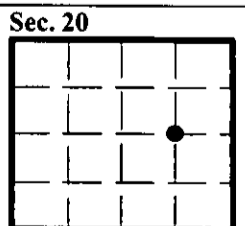
Reg. No.: 9008LS

Employer: U.S. FOREST SERVICE



Office of Clerk and Recorder, County of LINCOLN. This "corner record" was filed for record on JULY 31, 1997 was noted on the cross-index plat and is assigned page No. 9889 in book No. _____

CORAL M. CUMMINGS
County Official



• - corner this sheet

Cross Index No. C.O.E. T. 37N R. 27W P.M., MT
5602/2