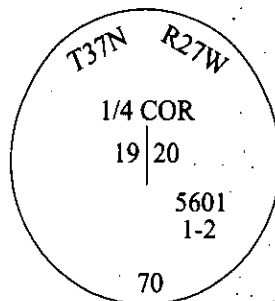


CERTIFIED CORNER RECORDATION

Corner 1/4&C.O.E. Sec. 19&20 T. 37N R. 27W P.M., MT Lincoln County
5601/1-2

- I. 1893 G.L.O. Original Record by Peter McCardell et. al.: Set a post, 3 ft. long, 3 ins. square, 24 ins. in the ground, for 1/4 sec. cor. mkd. "1/4 S" on W. face. Established two bearing trees.
- 1968 Certified Corner Recordation by Lawrence A. Signani Registration No. 11422: Found a 4 in. tile pipe, (no record found), for 1/4 corner, witnessed by one original bearing tree. Established one new bearing tree.
- 1970 Corp of Engineers Libby Dam Lake Koocanusa Cadastral District file No. E-53-1-154: Set a standard U.S.C.E. disk mkd. as shown.
- II. Found a 2 in. diam. iron pipe, firmly set, protruding 6 ins. above the ground, with a 2 1/2 in. diam. brass cap mkd. as shown below:



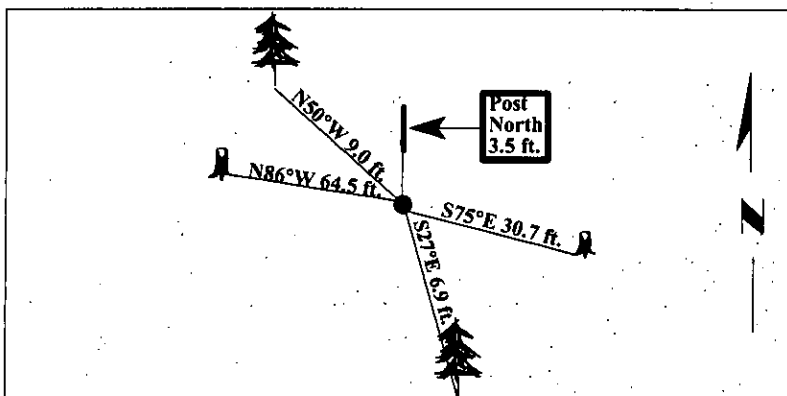
from which:

- A pine, 11 ins. diam., bears N50°W, 9.0 ft. dist., mkd. "FS/RM". (1968-record)
- A pine stump, 14 ins. diam., bears N86°W, 64.5 ft. dist., no visible scribe. (G.L.O.-record)
- A pine stump, 22 ins. diam., bears S75°E, 30.7 ft. dist. (G.L.O.-record)

- III. Established one new bearing tree:
A pine, 9 ins. diam., bears S27°E, 6.9 ft. dist., mkd. "1/4 S20 BT".

A 6 in. diam. x 5 ft. tall, round treated fence post, located North, 3.5 ft. dist. to side center.
Painted bearing trees and attached Land Survey Monument and Bearing Tree signs.

Magnetic Declination: 20° East.



SKETCH OF CORNER



I, Mark Federman
certify the information shown herein is true and correct.

I, Ronald A. Pearson
certify that this Corner Record correctly represents work performed by me or under my direction in compliance with the "Corner Recordation Act" (70-22-101, et seq., M.C.A.)

Signature of Surveyor & Seal

Date: 04/17/97

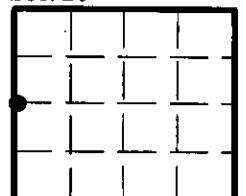
Reg. No.: 9008LS

Employer: U.S. FOREST SERVICE

Office of Clerk and Recorder, County of LINCOLN. This "corner record" was filed for record on JULY 31, 1997 was noted on the cross-index plat and is assigned page No. 9886, in book No. CORAL M. CUMMINGS

County Official By Deb

Sec. 20



• - corner this sheet

Cross Index No. P-5 C.O.E. T. 37N R. 27W P.M., MT
5601/1-2