

# CERTIFIED CORNER RECORDATION

Corner 1/4 Sec. 29&32 T. 37N R. 27W P.M., MT Lincoln County

I. 1893 G.L.O. Original Record by Peter McCardell et. al.: Set a post, 3 ft. long, 3 ins. square, 24 ins. in the ground, for 1/4 sec. cor. mkd. "1/4 S" on N. face. Established two bearing trees.

1969 Certified Corner Recordation by Lawrence A. Signani Registration No. 11422: Found one original bearing tree, which is a stump, bearing N30°E, 59 lks. dist. From the found stump, at original record bearing and distance, set a 1 in. diam. iron pipe. Established one new bearing tree.

II. Found a 1 in. diam. iron pipe, firmly set, protruding 2 ins. above the ground.

from which:

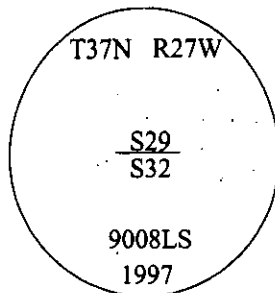
A pine, 9 ins. diam., bears N62°W, 11.7 ft. dist., with a healed face. (no record)

A pine, 14 ins. diam., bears S40°W, 59.5 ft. dist., with visible scribe. (1969-record)

A stump hole, bears S53°W, 97.0 ft. dist. (G.L.O.-record)

A decayed stump, bears N30°E, 38.9 ft. dist., with visible scribe. (G.L.O.-record)

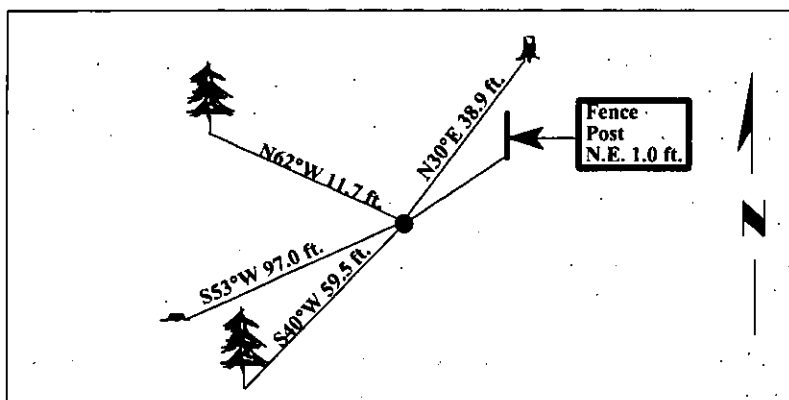
III. At the corner position, as determined by the found evidence, set an aluminum rod, 30 ins. long, 3/4 in. diam., with a 3 1/4 in. diam. aluminum cap, 2 ins. above the ground, mkd. as shown. Drove the aluminum rod into the found 1 in. iron pipe. Used driveable rod, due to the proximity of the fence post.



A 6 in. x 8 in. wood fence post, located N.E., 1.0 ft. dist. of the corner, with a Land Survey Monument sign attached.

Painted bearing trees and attached Land Survey Monument and Bearing Tree signs.

Magnetic Declination: 20° East.



SKETCH OF CORNER

I. Mark Federman

certify the information shown herein is true and correct.

I. Ronald A. Pearson

certify that this Corner Record correctly represents work performed by me or under my direction in compliance with the "Corner Recordation Act" (70-22-101, et seq., M.C.A.)

Date: 04/16/97

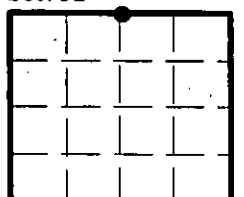
Reg. No.: 9008LS

Employer: U.S. FOREST SERVICE

Office of Clerk and Recorder, County of LINCOLN. This "corner record" was filed for record on JULY 31, 1997 was noted on the cross-index plat and is assigned page No. 9880 in book No. CORAL M. CUMMINGS

County Official By Deb

Sec. 32



• - corner this sheet

Cross Index No. V-7 T. 37N R. 27W P.M., MT