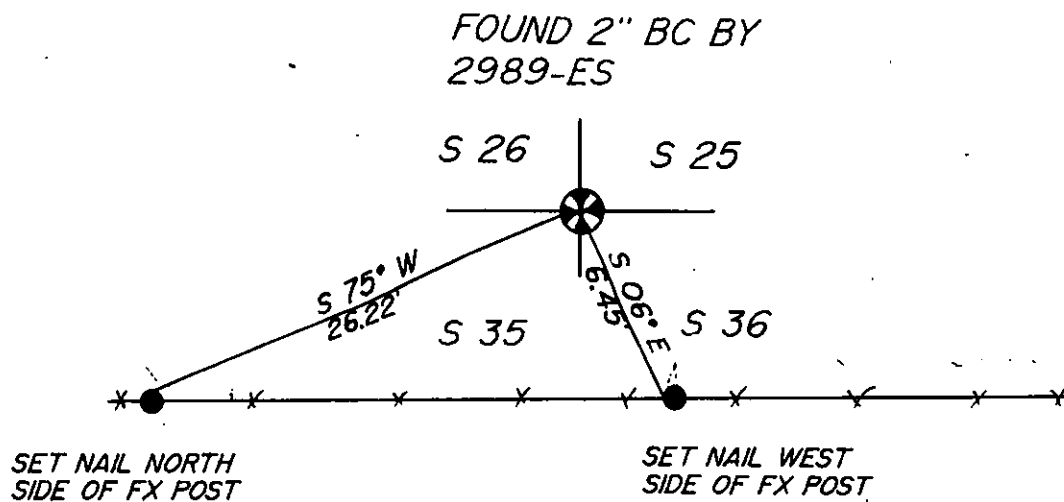


- INSTRUCTIONS
1. Original and/or subsequent record used to evaluate the corner position.
  2. Description of evidence found, note discrepancies in the record, state method of establishing lost or obliterated corners.
  3. Description of monument and accessories set to perpetuate the corner position.
  4. Sketch or corner, show all pertinent data which can best be shown in a sketch, example, corner marking, topography ties, position of accessories, etc.
  5. Certification must be signed and sealed by Registered Land Surveyor in State of Montana.
  6. Fill in Cross Index & Section Diagram at bottom of sheet.

## CERTIFIED CORNER RECORDATION



### SKETCH OF CORNER

Office of Clerk and Recorder, County of LINCOLN. This "corner  
record" was filed for record on the MAY 14 day of 1987  
was noted on the cross-index plat and is assigned page No. 3542, in  
book No. \_\_\_\_\_

*Janet H. Siegel by Bill Siegel*  
County Official Deputy

Cross Index No. \_\_\_\_\_ T. 37N 27W R. \_\_\_\_\_ PMM

### CERTIFICATION

I, W. F. REICHHOFF

certify the information shown herein is true and correct.

Signature Ground Party Chief

I, THOMAS E. SANDS

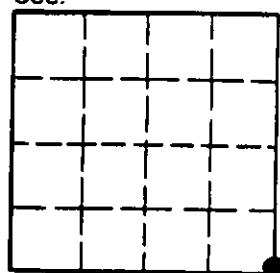
certify that this Corner Record correctly represents work performed  
by me or under by direction in compliance with the "Corner  
Recordation Act" (70-27101, et seq., M.D.A.)

*Thomas E. Sands*  
Signature of Surveyor & Seal

Date: 5 / 87 Reg. No. 7975-S

Employer: SANDS SURVEYING

Sec. 26



• - corner this sheet