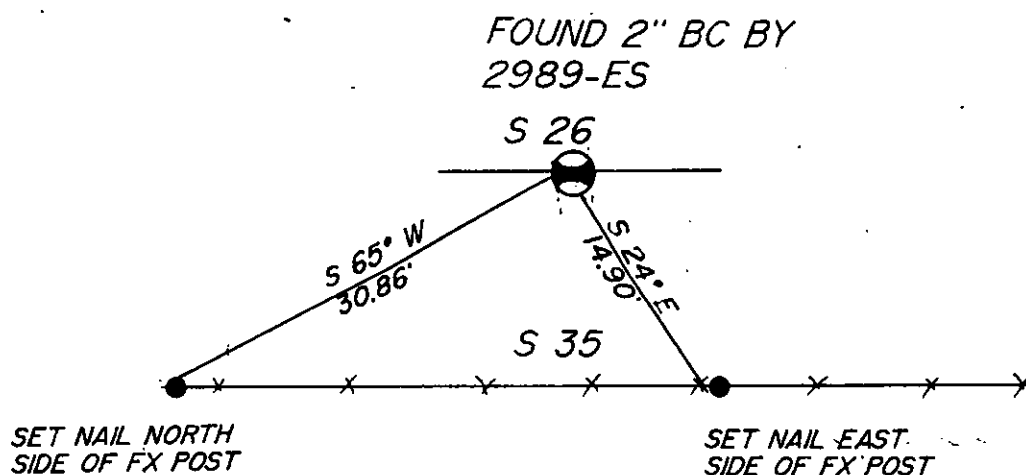


INSTRUCTIONS

1. Original and/or subsequent record used to evaluate the corner position.
2. Description of evidence found, note discrepancies in the record, state method of establishing lost or obliterated corners.
3. Description of monument and accessories set to perpetuate the corner position.
4. Sketch or corner, show all pertinent data which can best be shown in a sketch, example, corner marking, topography ties, position of accessories, etc.
5. Certification must be signed and sealed by Registered Land Surveyor in State of Montana.
6. Fill in Cross Index & Section Diagram at bottom of sheet.

CERTIFIED CORNER RECORDATION



SKETCH OF CORNER

Office of Clerk and Recorder, County of LINCOLN. This "corner record" was filed for record on the MAY 14 day of 1987 was noted on the cross-index plat and is assigned page No. 3541, in book No. _____

Janet EF Sigel by Bill Sigel
County Official Deputy

Cross Index No. _____ T. 37N 27W R. _____ PMM

CERTIFICATION

W. F. REICHHOFF

I, _____, certify the information shown herein is true and correct.

Signature Ground Party Chief

THOMAS E. SANDS

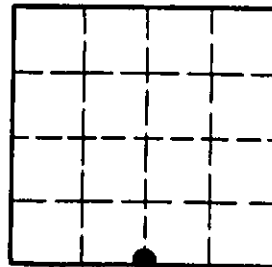
I, _____, certify that this Corner Record correctly represents work performed by me or under my direction in compliance with the "Corner Recordation Act" (70-22-101, et seq., M.D.A.)

Signature of Surveyor & Seal

Date: 5 / 87 Reg. No. 7975-S

Employer: SANDS SURVEYING

Sec. 26



• - corner this sheet