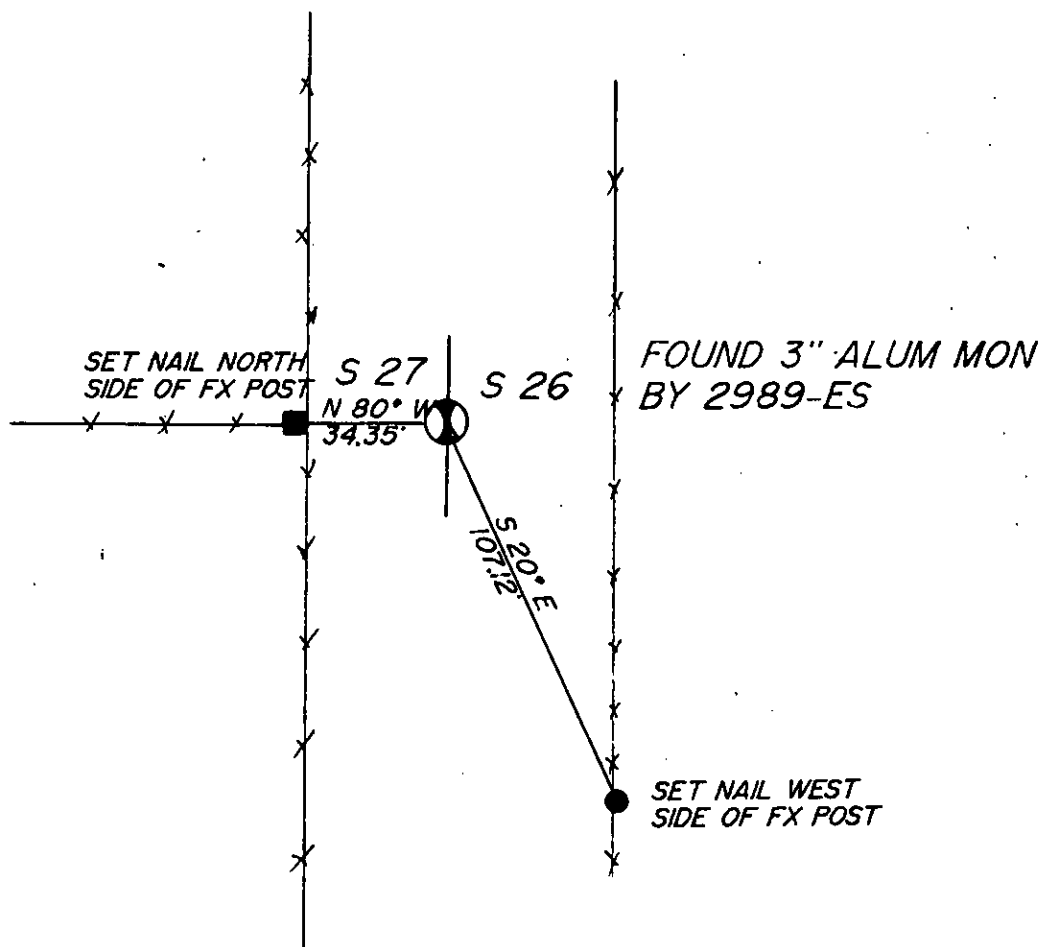


- INSTRUCTIONS**
1. Original and/or subsequent record used to evaluate the corner position.
  2. Description of space found, note discrepancies in the record, state method of establishing lost or obliterated corners.
  3. Description of monument and accessories set to perpetuate the corner position.
  4. Sketch of corner, show all pertinent data which can best be shown in a sketch example, corner marking, topography ties, position of accessories, etc.
  5. Certification must be signed and sealed by Registered Land Surveyor in State of Montana.
  6. Fill in Cross Index & Section Diagram at bottom of sheet.

## CERTIFIED CORNER RECORDATION



### SKETCH OF CORNER

**CERTIFICATION**

I, W. F. REICHHOFF  
certify the information shown herein is true and correct.

Signature Ground Party Chief

I, THOMAS E. SANDS  
certify that this Corner Record correctly represents work performed by me or under my direction in compliance with the "Corner Recordation Act" (M.D.A. 10-22-101, et seq., M.D.A.)

Signature of Surveyor & Seal

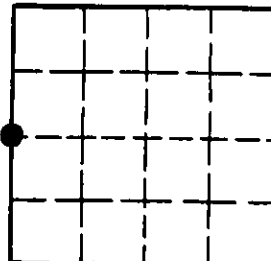
Date: 5 / 87 Reg. No. 7975-S  
Employer: SANDS SURVEYING

Office of Clerk and Recorder, County of LINCOLN. This "corner record" was filed for record on the MAY 14 day of 1987, was noted on the cross-index plat and is assigned page No. 3548, in book No. \_\_\_\_\_

County Official Janet EF Sigel by Bill Smith Deputy

Cross Index No. \_\_\_\_\_ T. 37N 27W R. \_\_\_\_\_ PMM

Sec. 26



• - corner this sheet