

## INSTRUCTIONS

1. Original and/or subsequent record used to evaluate the corner position.
2. Description of evidence found, note discrepancies in the record, state method of establishing lost or obliterated corners.
3. Description of monument and accessories set to perpetuate the corner position.
4. Sketch or corner, show all pertinent data which can best be shown in a sketch example, corner marking, topography lies, position of accessories, etc.
5. Certification must be signed and sealed by Registered Land Surveyor in State of Montana.
6. Fill in Cross Index & Section Diagram at bottom of sheet.

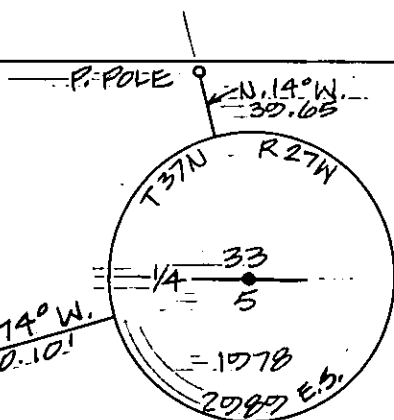
## - CERTIFIED CORNER RECORDATION

Corner South 1/4 corner Section 33 T. 37N R. 27W P.M.M. Lincoln County

Record: Set a post 3' long x 3" sq. 24" in the ground  
from which:

a pine 14" diam. bears N. 41° 30' W. 94 lks.  
a pine 28" diam. bears S. 52° E. 54 lks.

SET - BRASS CAP. -----



SKETCH OF CORNER

### CERTIFICATION

I, \_\_\_\_\_  
certify the information shown herein is true and correct.

Signature Ground Party Chief

I, D.K. Marguardt  
certify that this Corner Record correctly represents work performed  
by me or under by direction in compliance with the "Corner  
Recordation Act" (70-22-101, et seq., M.D.A.)

Signature of Surveyor & Seal

Date: 7-10-81 Reg. No. 2289ES

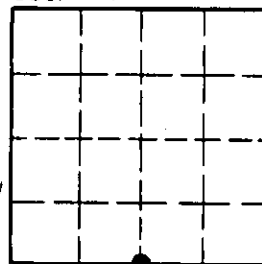
Employer: \_\_\_\_\_

Office of Clerk and Recorder, County of Lincoln. This "corner  
record" was filed for record on the February 17<sup>th</sup> day of 1981  
was noted on the cross-index plat and is assigned page No. 1546, in  
book No. 1

Eleanor L. Hughes by Betty L. Conner  
County Official deputy

Cross Index No. 2-11 T. 37N R. 27W P.M.M.

Sec. 33



• - corner this sheet