

# PLSS CORNER RECORD

Corner 1/4 S10 T. 37 N. R. 27 W. P.M.M. LINCOLN County

I. 1893 GLO Subdivision and Menders of fractional T. 37 N., R. 27 W. by Peter. M. Cardell and Abraham L. Jaqueth: Set a limestone, 16x12x10 ins., 11 ins. in the ground, for 1/4 sec. cor. marked 1/4 on N. face, from which:

A pine, 8 ins. diam, bears N30°E, 13 lks. dist., mkd. 1/4 S BT.  
A pine, 10 ins. diam, bears S20°W, 46 lks. dist., mkd. 1/4 S BT.

1974 Certificate of Survey No. 75 by Harry P. Medland, MT Reg. No. 2229S: Set 5/8" S.P. w/Surv-Kap. Set from stump of original B.T. 8" pine, N30°E, 13 lks Set 2 RM's:

12" pine, S16°W, 73.62'  
10" pine, N53°W, 66.50'

1998 Certificate of Survey No. 134360 by Thomas E. Sands, MT Reg. No. 7975S: Found 5/8" rebar.

II. Found 5/8" rebar, no cap, 8" above ground.

No original bearing trees found.

III. Establish 2 new bearing trees:

A ponderosa pine, 13 ins. diam, bears S10°W, 27.6 ft. dist., mkd. 1/4 S10 BT.  
A ponderosa pine, 16 ins. diam, bears S38°W, 97.6 ft. dist., mkd. 1/4 S10 BT.

Painted the scribed faces red and 6" red band on Bearing Trees. Attached Land Survey Monument and Bearing Tree signs. Set a 6 ft. steel guard post South, 3 ft. with Land Survey Monument and Property Boundary decals attached.

Date of Fieldwork: 8/14/2014  
Survey crew: Tom Hommel  
Magnetic declination: 14° East assumed  
Equipment used: Hand compass and loggers tape

U.S. Forest Service, Supervisors Office, 31374 Hwy. 2, Libby, MT 59923 (406) 293-6211

## CERTIFICATION

I, \_\_\_\_\_  
certify the information shown herein is true and correct.

Signature Ground Party Chief

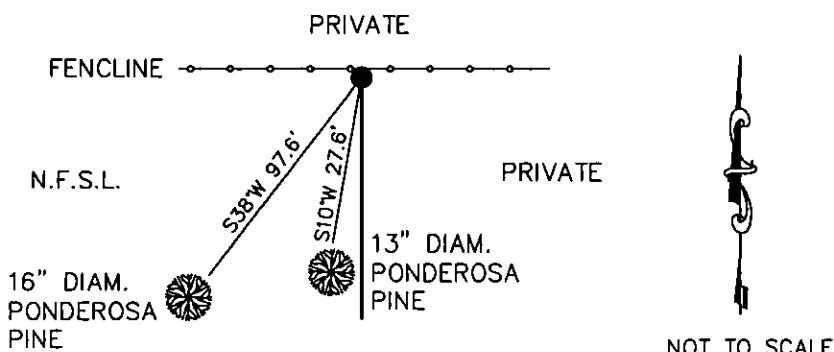
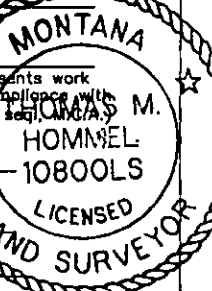
Thomas M. Hommel

I, \_\_\_\_\_  
certify that this Corner Record correctly represents work performed by me or under my direction in compliance with the "Corner Recordation Act" (70-22-101, et seq., MCA).

Signature of Surveyor & Seal

Date: 12/3/14 Reg. No. 10800S

Employer: U. S. Forest Service



Office of Clerk and Recorder, County of Lincoln

Sec. 10

254907 BOOK: CCR CC&R'S PAGE: 12165 Pages:  
STATE OF MONTANA LINCOLN COUNTY  
RECORDED: 12/04/2014 12:11 KOI: CC&R'S  
TAMMY D. LAUER CLERK AND RECORDER  
FEE: \$0.00 BY Chad E. R. Deputy  
FOR: FILED

Cross Index No. E 15 T. 37N. R. 27W. P.M., MT

Adopted November 7, 2012, Montana Board of Professional Engineers & Land Surveyors

● corner this sheet

